



上海利兰机械设备有限公司

Shanghai Lilan Machinery Equipment Co.,Ltd

地 址: 上海市宝山区富联路1695号5栋
(上海机器人产业园)

电 话: 021-56876570

网 址: www.lilanpackage.com

www.lilanpack.com

www.lilanpack.cn

传 真: 021-56876308

邮 箱: sales@lilanpack.com

A d d: Building 5, No.1695 Fulian Rd,
Baoshan District, Shanghai, China

T e l: 021-56876570

W e b: www.lilanpackage.com

www.lilanpack.com

www.lilanpack.cn

F a x: 021-56876308

E-mail: sales@lilanpack.com

利兰智能装备(苏州)有限公司

Lilan Intelligent Equipment (Suzhou) Co.,Ltd

地 址: 苏州市吴中区天鹅荡路36号

电 话: 0512-65699998

网 址: www.lilanpackage.com

www.lilanpack.com

www.lilanpack.cn

邮 箱: sales@lilanpack.com

A d d: No.36 Tian Edang Rd,Wuzhong
District, Suzhou,China

T e l: 0512-65699998

W e b: www.lilanpackage.com

www.lilanpack.com

www.lilanpack.cn

E-mail: sales@lilanpack.com

智能包装生产线引导者

THE LEADER OF
INTELLIGENT PACKAGING LINE SOLUTION

LILAN

COMPANY PROFILE

企业介绍

上海利兰机械设备有限公司坐落于交通便捷、配套设施完善的上海机器人产业园，是一家集研发，生产，销售，服务于一体的高科技企业。主要致力于食品，纯净水，饮料，啤酒，粮油等行业二次包装设备及智能生产线系统工程的应用和相应的研究开发工作；目前主要产品系列是全自动纸箱包装机，伺服坐标(5加仑)码垛机，全自动码垛机，全自动卸瓶垛机，全自动装卸笼系统，机器人码垛系统，机器人装箱系统，高速分道机，输送系统。

公司研发团队具有丰富的包装行业，机器人系统工程，非标自动化设备开发及应用经验，加上自主设计和研发能力，使得我们有能力提供高质量，较低成本的产品，系统和服务，从而让利给我们的用户。公司本着“以客户为中心，以人才为根本”企业理念，致力于向客户提供高性价比的产品，高性能的系统解决方案和高满意度的优质服务。让我们：携手共进、互惠共赢。

Shanghai Lilan Machinery Equipment Co., Ltd, located in Shanghai Industrial Park of Robotics, is a high-tech enterprise integrating R&D, production, sales and service. We devote in applying the second packaging equipment and intelligent production line to many industries including foods, water, juice, beer, oils etc. Our main production series mainly include automatic carton packing machine, Servo coordinate (5 gallon) palletizer, automatic palletizer, automatic bottles depalletizing machine, auto loading and unloading system, robot palletizing system, high-speed lane divider, conveying system and other MTU (manufacture to non-standard) production line.

The company's R&D team has rich experience in the packaging industry, robotics system engineering, non-standard automation equipment development and application, coupled with independent design and R&D capabilities, which enables us to provide high-quality, low-cost products, systems, and services, thereby benefiting our users. The company adheres to the corporate philosophy of "Customer-centric and talent oriented" and is committed to providing customers with cost-effective products, high-performance system solutions, and high-quality services with high satisfaction. Let's work together for mutual benefit and win-win situation.

CATALOGUE

目录

传统码垛系列 Traditional palletizing series

01	伺服坐标码垛 Servo coordinate palletizer	07
02	低位龙门码垛 Low level gantry palletizer	09
03	高位龙门码垛 High level gantry palletizer	10

机器人码垛 Robot palletizing series

04	机器人码垛 Robot palletizer	12
05	五加仑大桶水机器人码垛 Robot palletizer for 5 gallon barrels	13
06	机器人双线码垛 Dual-line robot palletizer	14
07	机器人多线码垛 Multiple-line robot palletizer	14

卸垛机系列 Depalletizer series

08	低位卸垛机 Low level depalletizer	16
09	高位卸垛机 High level depalletizer	17
10	机器人卸垛机 Robot depalletizer	18

装箱系列 Carton packing series

11	伺服坐标装箱 Servo coordinate carton packing machine	20
12	伺服坐标装箱线+机器人装井字格 Servo coordinate carton packing line(with cardboard partition)	21
13	机器人装箱 Robot carton packing machine	22
14	开装封一体机 3 in 1 monoblock case packing machine (case erector, case packer, case sealer)	26
15	蜘蛛手机器人集成系统 Delta robot integrated system	27

热熔胶纸包机系列 Wraparound case packing machine

16	侧推式裹包机/落差式纸包机 Side pushing wraparound case packer/ Drop type wraparound case packer	30
17	高速直线式纸包机 High speed linear wraparound case packer	31
18	卡包机系列 Cluster packer	32

膜包机系列 Shrink film packing machine

装卸笼系统 Automatic retort basket loading and unloading system

立库系统 Automated storage and retrieval (AS/RS)

整线工程 Turnkey production line

COMPANY HONOR

公司荣誉

公司秉持“以客户为中心，以人才为根本”企业理念，遵循对每一台设备负责，对每一位客户负责的方针，致力于推进包装技术发展，为民族工业富强贡献力量。自成立以来，公司持有超100项专利证书，并获得高新技术企业、专精特新企业、企业技术中心、科技型企业认证。可靠稳定的质量使公司产销量及各项综合经济指标稳步发展。

The company adheres to the corporate philosophy of "customer-centric and talent oriented", follows the policy of being responsible for every device and every customer, and is committed to promoting the development of packaging technology. Since established, our company has held over 100 patent certificates and has obtained certifications of high-tech enterprise, specialized and sophisticated enterprises, enterprise technology center, scientific and technological enterprise. Reliable and stable quality ensures the steady development of the company's production, sales, and various comprehensive economic indicators.



智能包装生产线引导者

Leader of Intelligent Packaging Production Line

MAIN PRODUCT

主营业务

包括机器人系统集成、柔性包装生产线、自动纸箱包装系统、自动码垛系统、自动装卸笼系统、AGV系统、自动立库系统、快消品自动包装生产线、自动装卸瓶系统、自动液态生产线等。

Customized robot system integration, flexible packaging production line, automatic carton packaging system, automatic cage loading and unloading system, automatic palletizing system, AGV system, automatic fast-moving consumer goods (FMCG) packaging Line, automatic bottle loading and unloading system, automatic liquid filling production line, etc.

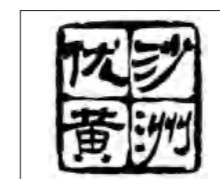


“以客户为中心，以人才为根本”

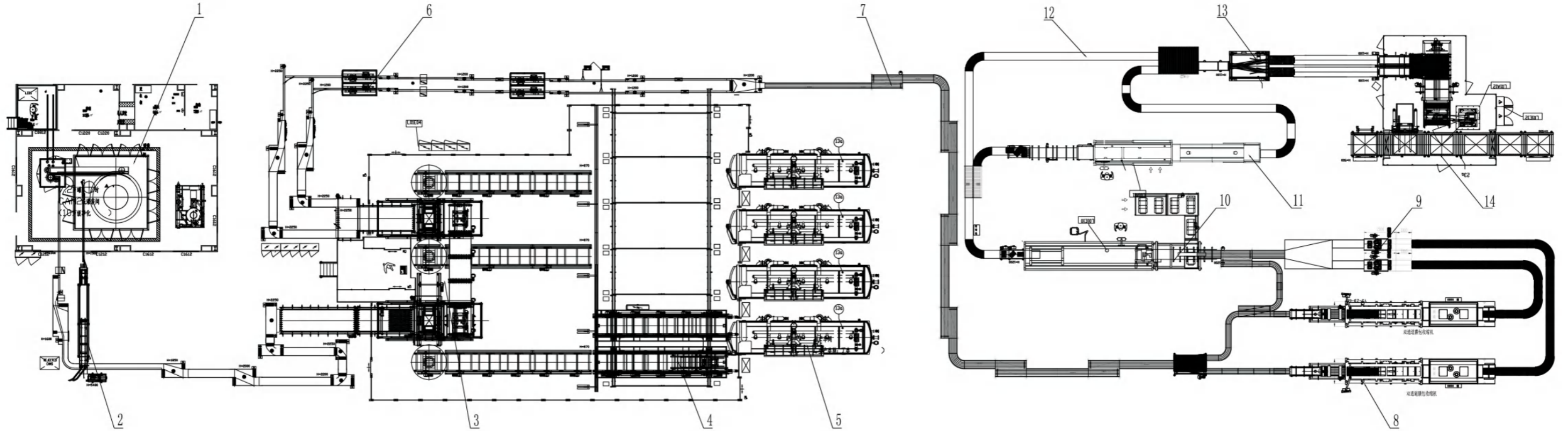
"Customer-centric, talent oriented"

PARTNERS

合作伙伴



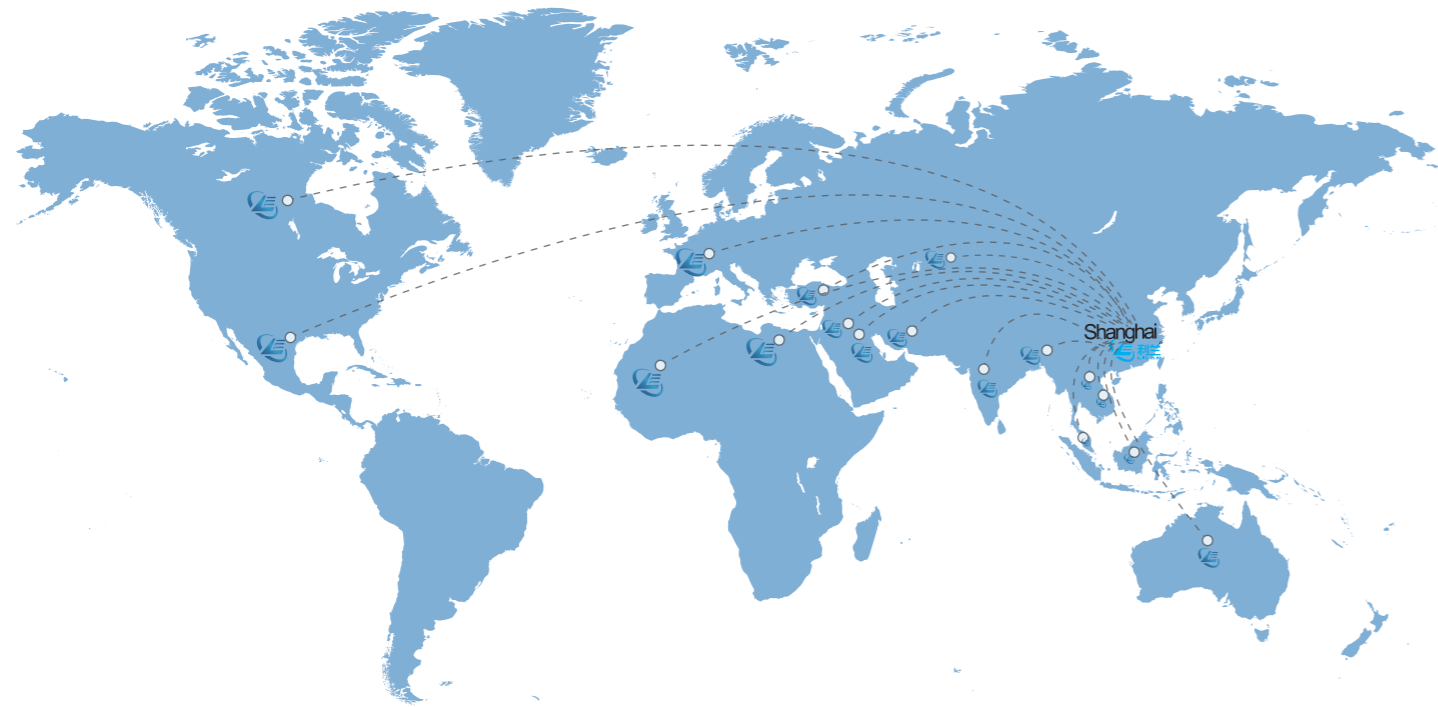
生产线平面图 Turnkey Line Layout



- | | |
|------------|----------------|
| 01 灌 装 机 | 08 双通道热收缩膜包装机 |
| 02 洗 罐 机 | 09 膜包汇流机构 |
| 03 全自动装卸笼机 | 10 高速纸箱包装机 |
| 04 自 动 台 车 | 11 单通道热收缩膜包装机 |
| 05 杀 菌 釜 | 12 箱 输 送 线 |
| 06 吹 干 机 | 13 箱 自 动 分 箱 机 |
| 07 瓶 输 送 线 | 14 低位双通道码垛机 |

- | | |
|--|---|
| 01 Filling machine | 08 Double-lane shrink wrapping machine |
| 02 Can washer | 09 Shrink bag converge device |
| 03 Automatic loading and unloading cage system | 10 High speed wraparound case packing machine |
| 04 Cage shuttle | 11 Single-lane shrink wrapping machine |
| 05 Retort | 12 Carton conveyor |
| 06 Bottle dryer | 13 Carton divider |
| 07 Bottle conveyor | 14 Low position double-lane palletizer |

全自动生产包装线 / Automatic packaging system



- 工厂自营，核心装备自主研发的
Self-support factory Independently developed core equipment
- 定制化生产，交货准时
Customized production, delivery is on time
- 严格的图纸的保密管理
Strict confidentiality management of drawings

传统码垛系列 / Traditional palletizing series



罐垛
Can stack



箱垛
Carton stack



散瓶垛
Scattered bottle stack



膜包瓶垛
Film wrapped bottle stack

功能用途 Application

适用于盒装产品、箱装产品、膜包瓶、金属罐、桶装产品、袋装产品的整层码垛，可应用于饮品、食品、药品、日化等行业生产线。

This palletizer is used for stacking carton products, carton products, shrink film packing bottles, metal cans, barrel products and bag products on pallet according to the designed pattern. It can be applied to production lines in industries of beverages, food, pharmaceuticals, and daily chemicals etc.

工作原理 Working principle

将包装后的产品、箱子或者膜包产品，按照预定的排版码放到空栈板上，通过输送线送出。

Palletize the packaged products, cartons, or film wrapped products on empty pallets according to the predetermined pattern, and send them out through conveyor lines.

电器配置 ELECTRICAL CONFIGURATION

PLC	西门子	Siemens
变频器 VFD	丹弗斯	Danfoss
伺服电机 Servo motor	西门子	Siemens
光电传感 Photoelectric sensor	西克	SICK
气动组件 Pneumatic components	费斯托	FESTO
触摸屏 Touch screen	西门子	Siemens
低压电器 Low voltage apparatus	施耐德	Schneider
端子 Terminal	菲尼克斯	Phoenix
电机 Motor	SEW	



缠绕机
Stretch film wrapping machine



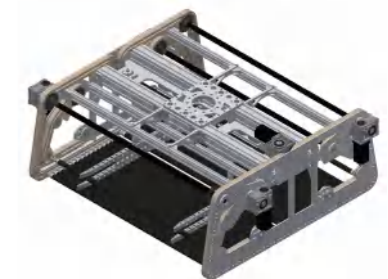
机器人编组
Robot grouping



兜底夹具
Bottom holding gripper



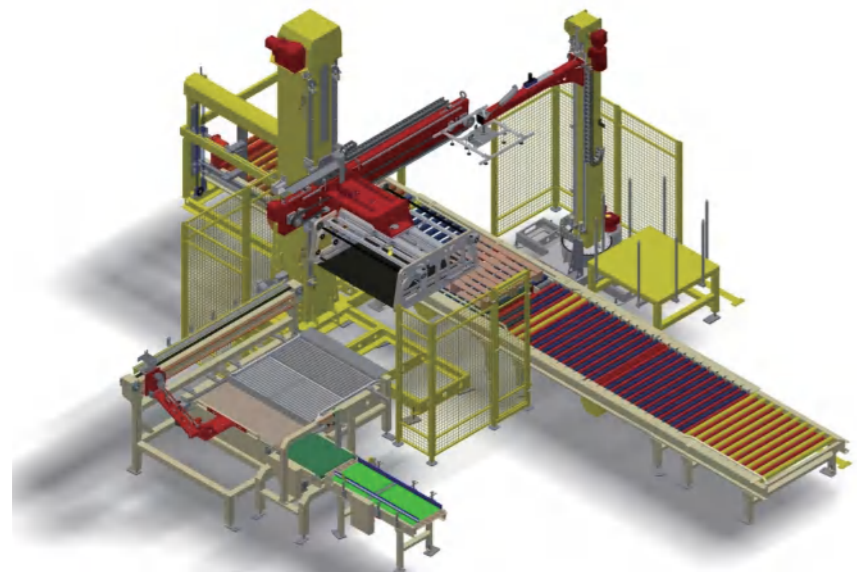
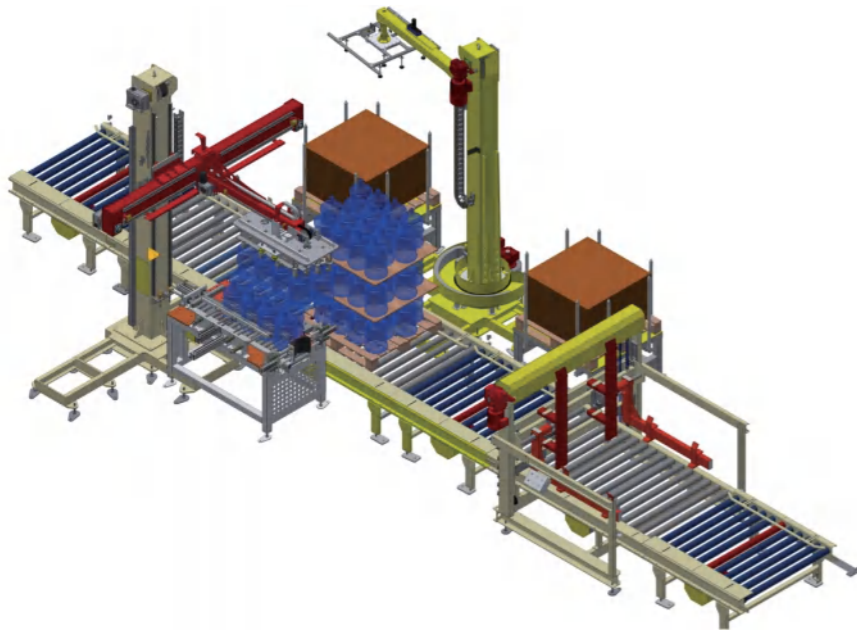
吸盘夹具
Suction cup gripper



伺服卷帘夹具
Servo sliding roller gripper

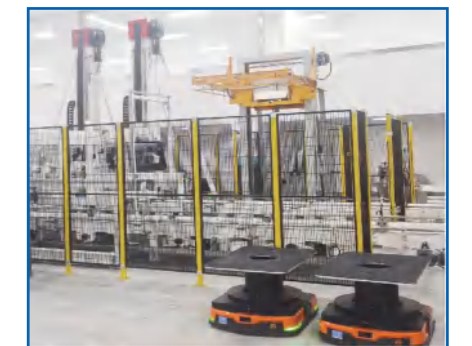
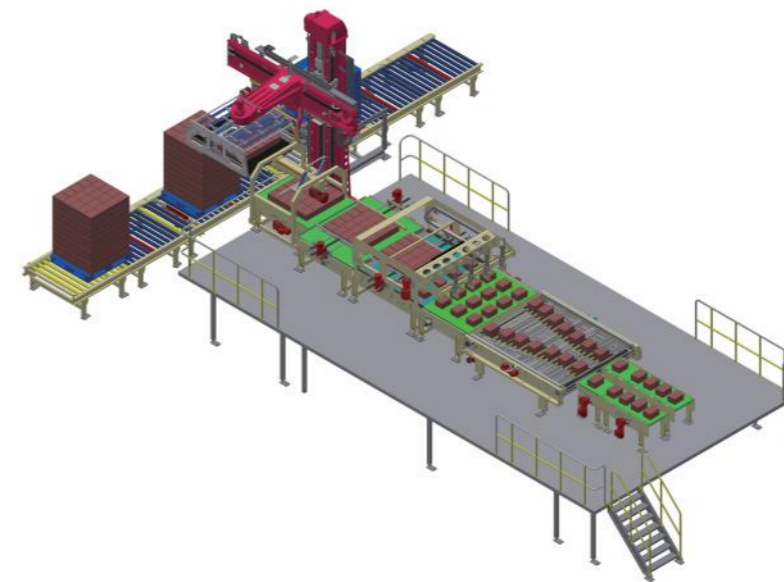
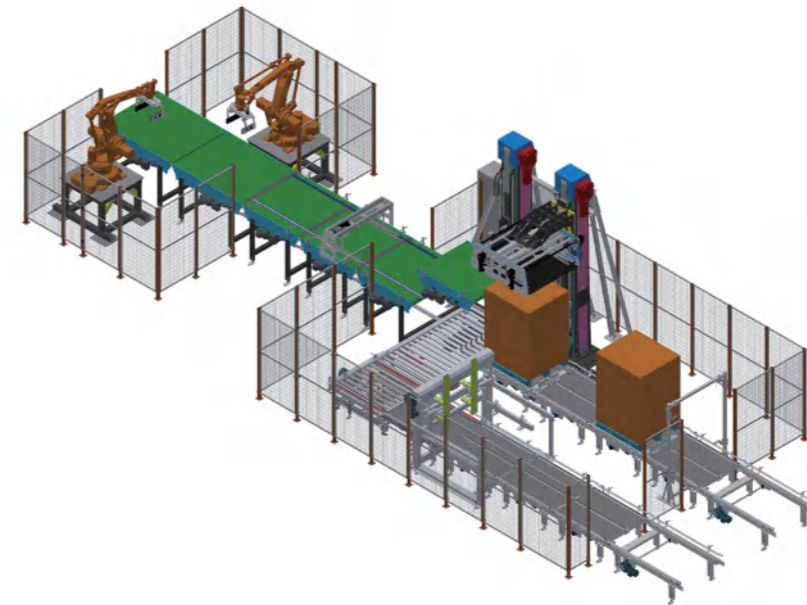
> 传统码垛系列> 伺服坐标码垛

>Traditional palletizing series> Servo coordinate palletizer



> 传统码垛系列> 伺服坐标码垛

>Traditional palletizing series> Servo coordinate palletizer



技术参数 TECHNICAL PARAMETER

型号 Model	LI-SCP20/40
稳定速度 Stable speed	20-40箱/分 (cartons/min)
动力电源 Power supply	380 AC ±10%, 50HZ, 3PH+N+PE



请用相机扫描
Pls scan the code with camera on phone

技术参数 TECHNICAL PARAMETER

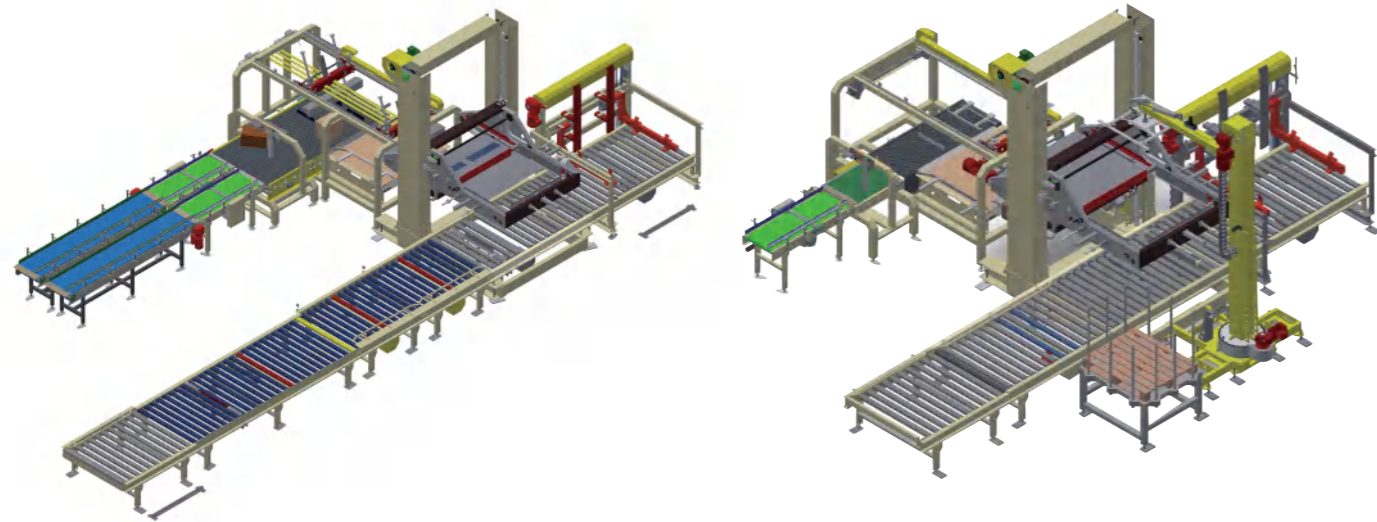
型号 Model	LI-SCP60/80/120/160
稳定速度 Stable speed	60-160箱/分 (cartons/min)
动力电源 Power supply	380 AC ±10%, 50HZ, 3PH+N+PE.



请用相机扫描
Pls scan the code with camera on phone

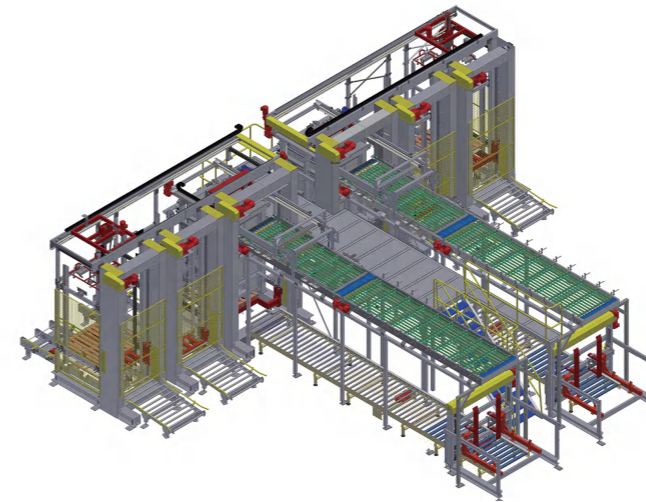
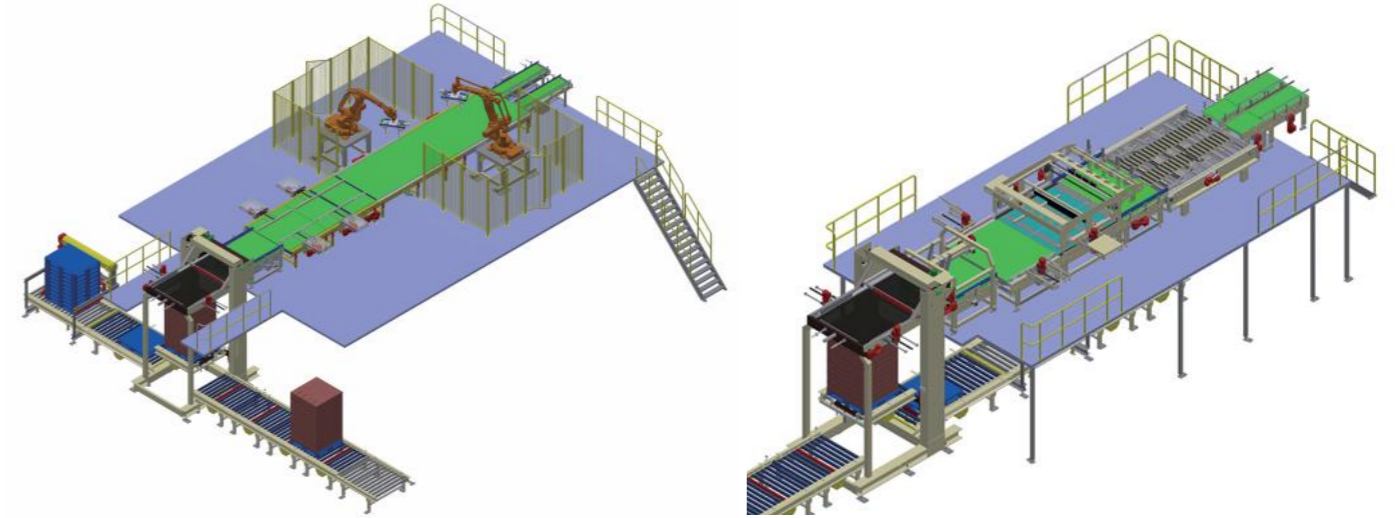
> 传统码垛系列> 低位龙门码垛

>Traditional palletizing series>Low level gantry palletizer



> 传统码垛系列> 高位龙门码垛

>Traditional palletizing series>High level gantry palletizer



技术参数 TECHNICAL PARAMETER

型号 Model	LI-LP40/60
稳定速度 Stable speed	30-60箱/分 (cartons/min)
动力电源 Power supply	380 AC ±10%, 50HZ, 3PH+N+PE.



请用相机扫描
Pls scan the code with camera on phone

技术参数 TECHNICAL PARAMETER

型号 Model	LI-HP60/80/120/160
稳定速度 Stable speed	60-160箱/分(cartons/min)
动力电源 Power supply	380 AC ±10%, 50HZ, 3PH+N+PE.



请用相机扫描
Pls scan the code with camera on phone

机器人码垛系统 / Robot Palletizing System

> 机器人码垛系列 > 机器人码垛 > Robot palletizing series > Robot palletizer



箱垛
Carton stack



袋垛
Bag stack

电器配置 ELECTRICAL CONFIGURATION

机械手	Robot arm	ABB/KUKA/FANUC	
PLC		西门子	Siemens
变频器	VFD	丹弗斯	Danfoss
伺服电机	Servo motor	西门子	Siemens
光电传感	Photoelectric sensor	西克	SICK
气动组件	Pneumatic components	费斯托	FESTO
触摸屏	Touch screen	西门子	Siemens
低压电器	Low voltage apparatus	施耐德	Schneider
端子	Terminal	菲尼克斯	Phoenix
电机	Motor	SEW	

功能用途 Application

适用于纸箱、空罐/瓶、膜包产品、袋、塑料框、铁桶、塑料桶的码垛，可应用于饮品、药品、日化等行业生产线。

This palletizing machine is used for palletizing cartons, empty cans/bottles, shrink film wrapping products, bags, plastic crate, iron and plastic barrels. It can be applied to the production lines in the industries of beverages, pharmaceuticals, and daily chemicals etc.

工作原理 Working principle

包装后的产品，箱子或者膜包产品进入码垛机的编组工位，机器人抓取编组好的产品码放到空托盘上（供栈机自动提供空托盘到码垛工位），完成码垛后将整垛产品输送出码垛机。

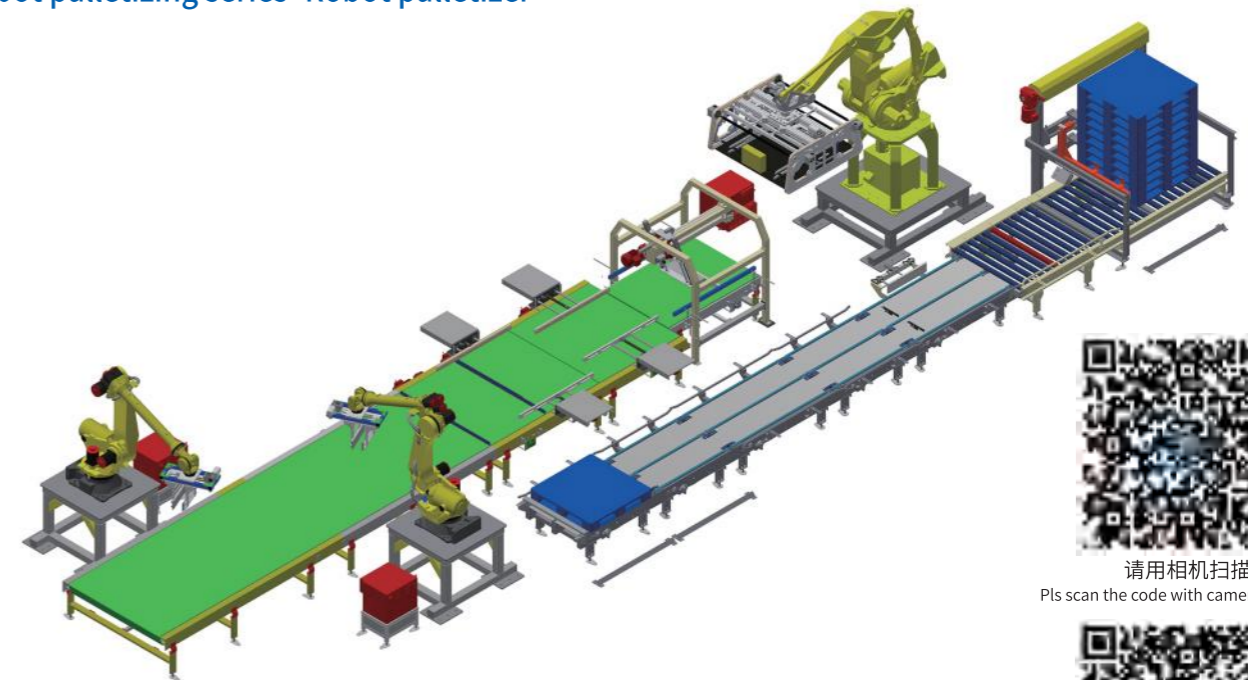
The packaged products, cartons or film wrapped products are transported to the arrangement mechanism, robot will pick the arranged products and place on the pallet according to the predetermined pattern, and after finishing the palletizing, output the finished pallet automatically



散瓶垛
Scattered bottle stack



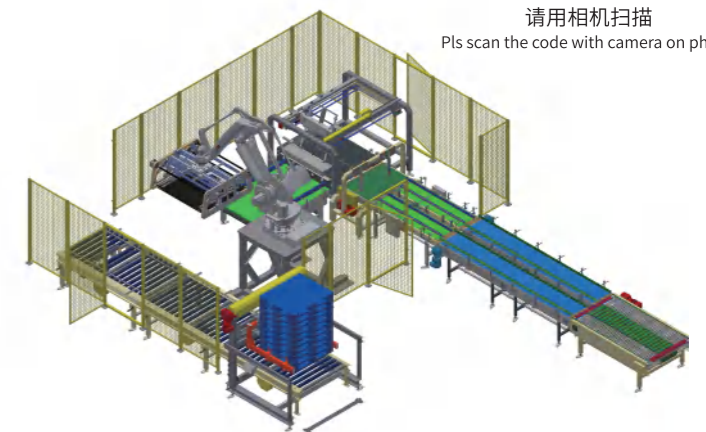
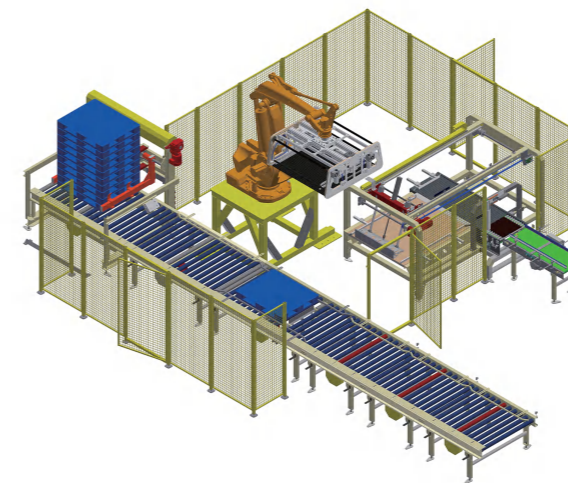
膜包瓶垛
Film wrapped bottle stack



请用相机扫描
Pls scan the code with camera on phone



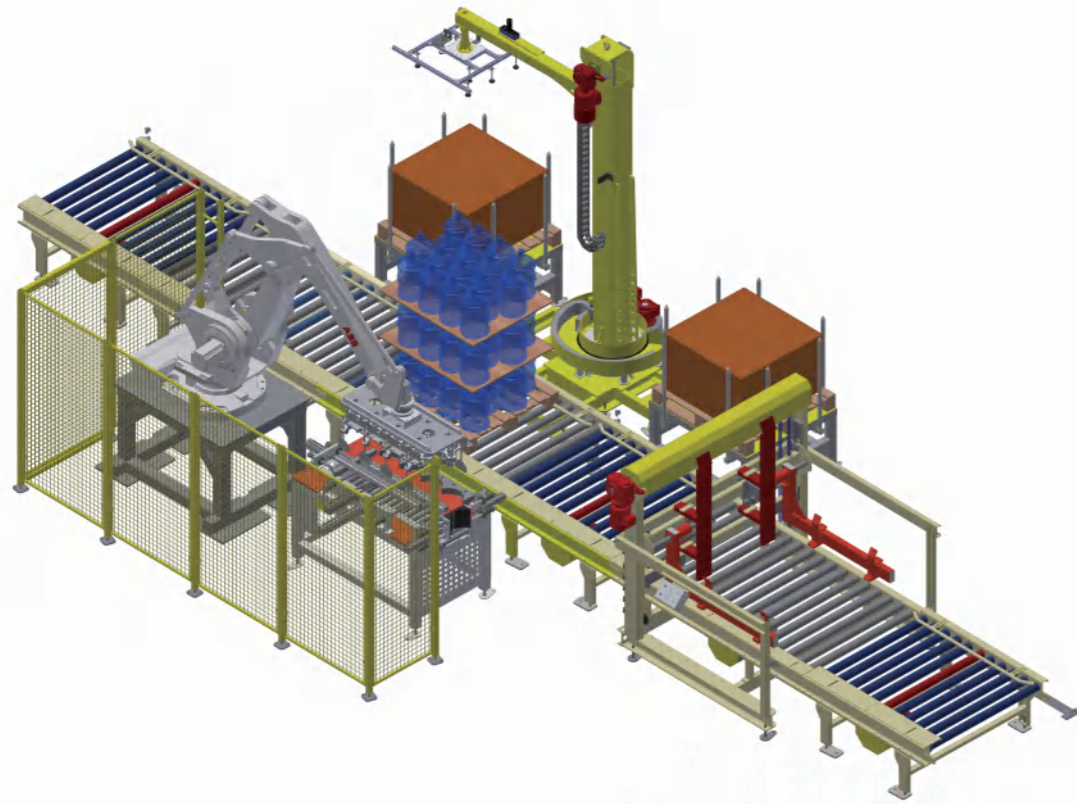
请用相机扫描
Pls scan the code with camera on phone



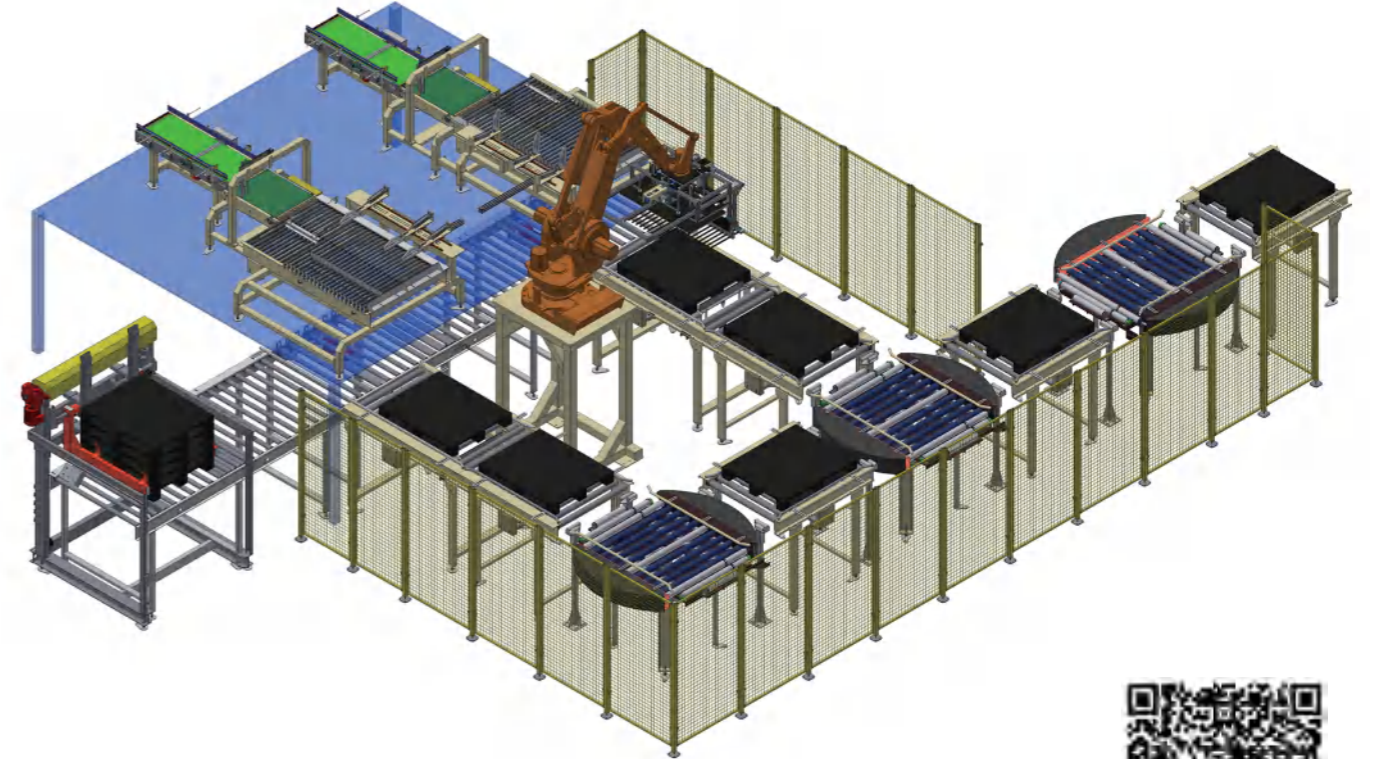
技术参数 TECHNICAL PARAMETER

型号 Model	LI-RP20/25/45/60/80/100
稳定速度 Stable speed	20-100箱/分钟(cartons/min) 15-20袋/分钟(bag/min)
动力电源 Power supply	380 AC±10%, 50HZ, 3PH+N+PE.

> 机器人码垛系列>五加仑大桶水机器人码垛
>Robot palletizing series>Robot palletizer for 5 gallon barrels

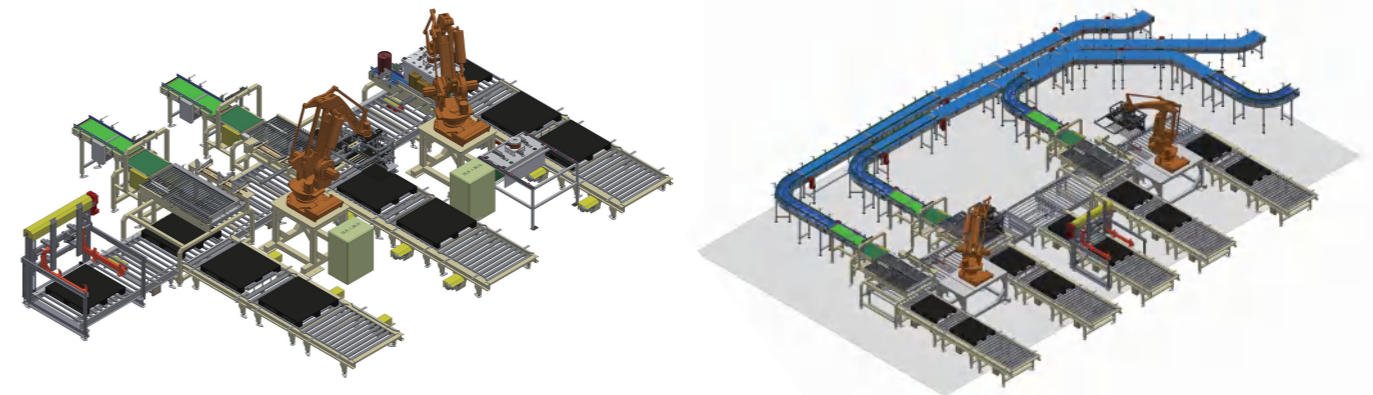


> 机器人码垛系列>机器人双线码垛
>Robot palletizing series>Dual-line robot palletizer



请用相机扫描
Pls scan the code with camera on phone

> 机器人码垛系列>机器人多线码垛
>Robot palletizing series>Multiple-line robot palletizer

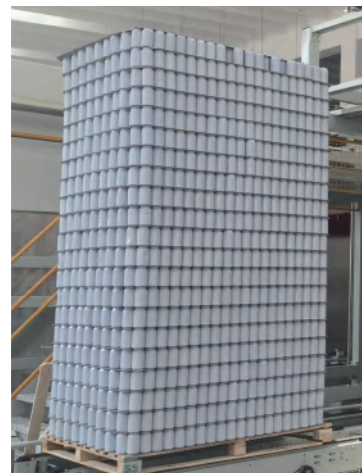


请用相机扫描
Pls scan the code with camera on phone

技术参数
TECHNICAL PARAMETER

型号 Model	LI-BRP40
稳定速度 Stable speed	7循环/分钟(circles/min)
动力电源 Power supply	380 AC±10%, 50HZ, 3PH+N+PE.

卸垛机系列 / Depalletizer series



罐垛
Can stack



散瓶
Scattered bottle stack

功能用途 Application

适用于PET瓶、玻璃瓶、易拉罐、马口铁罐、塑料桶、铁桶等自动卸垛。

Suitable for automatic unloading of PET bottles, glass bottles, cans, plastic barrels, iron barrels, etc.

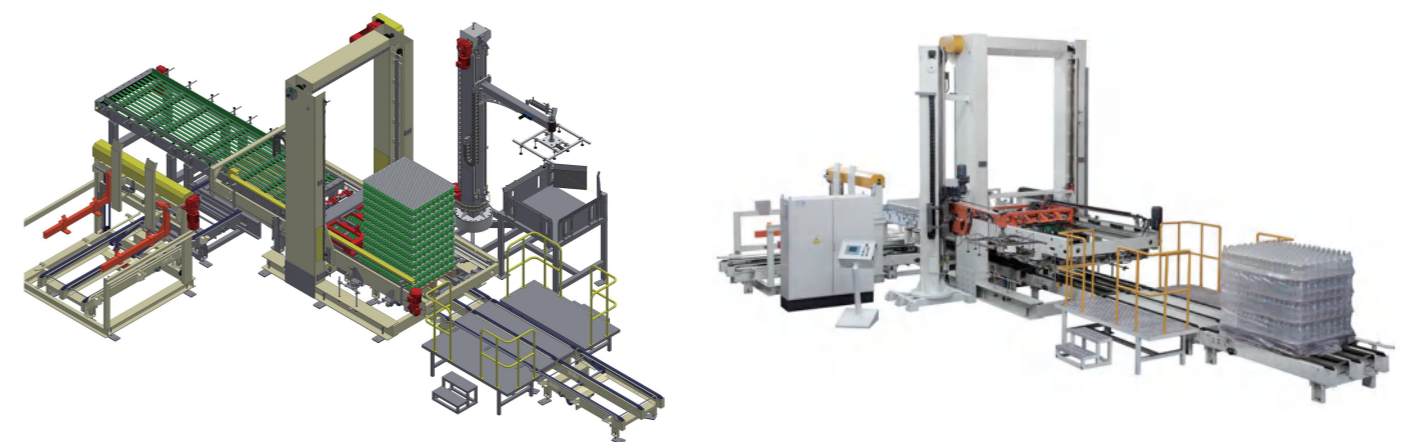
工作原理 Working principle

生产时，整垛产品通过链条输送带输送，产品进入卸垛工位，升降机提升整垛产品到卸瓶/罐高度，吸隔板机构将隔板吸至纸板仓，然后平移抱夹机构把整层产品平移到产品输送线上，重复循环以上动作，直至整垛产品卸完，空栈板会被输送到收栈机。

During production, the entire stack of products is transported by a chain conveyor to the depalletizing station, and the lifting mechanism will lift the entire pallet to the depalletizing height, and then the interlayer sheet sucking device will pick the sheet and place it into the sheet storage, after that, the transferring clamp will move the entire layer of products to the conveyor, repeat the above actions until finishing the whole pallet depalletizing and the empty pallets will go to the pallet collector.

>卸垛机系列>低位卸垛机

>Depalletizer series>Low level depalletizer



电器配置 ELECTRICAL CONFIGURATION

PLC	西门子	Siemens
变频器 VFD	丹弗斯	Danfoss
伺服电机 Servo motor	施耐德	Schneider
光电传感 Photoelectric sensor	西克	SICK
气动组件 Pneumatic components	费斯托	FESTO
触摸屏 Touch screen	西门子	Siemens
低压电器 Low voltage apparatus	施耐德	Schneider
端子 Terminal	菲尼克斯	Phoenix
电机 Motor	SEW	

技术参数 TECHNICAL PARAMETER

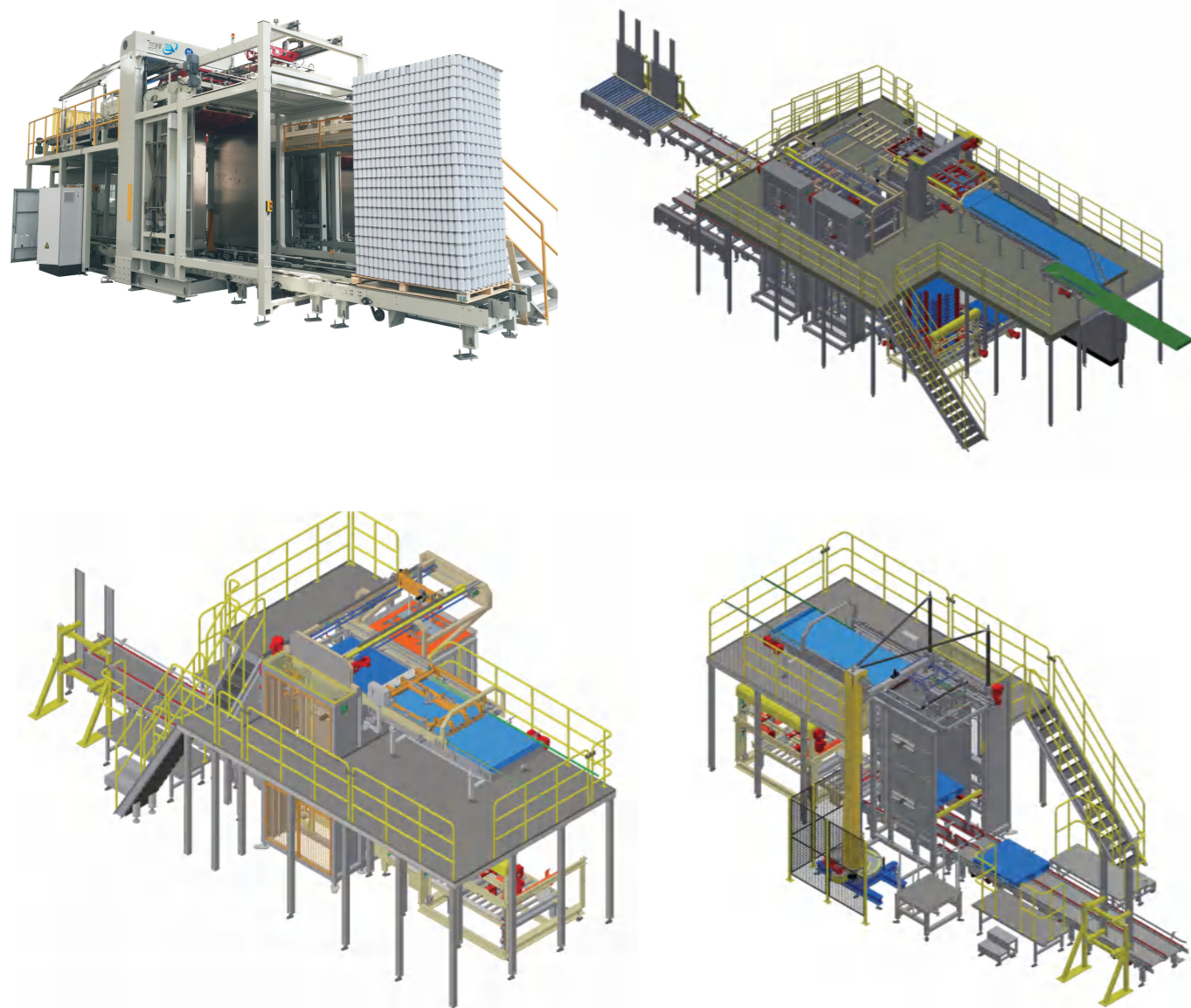
型号 Model	LI-LDP600
稳定速度 Stable speed	36000瓶/小时 (bottles/hour)
动力电源 Power supply	380 AC±10%, 50HZ, 3PH+N+PE.



请用相机扫描
Pls scan the code with camera on phone

> 卸垛机系列>高位卸垛机

>Depalletizer series>High level depalletizer



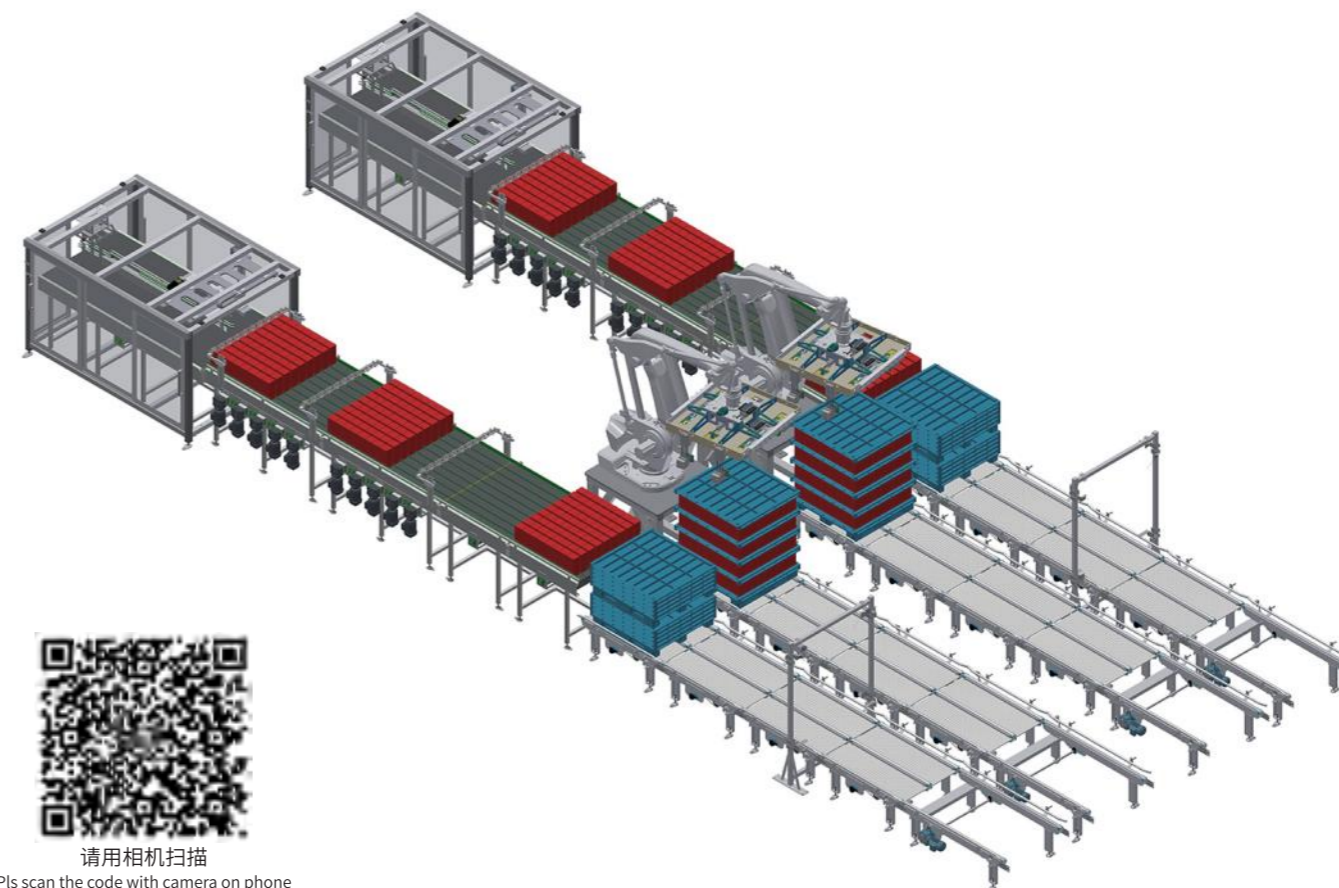
技术参数 TECHNICAL PARAMETER	
型号 Model	LI-HDP400/600/800/1200
整机速度 Stable speed	400-1200瓶罐/分钟 (bottle/can per min)
动力电源 Power supply	380 AC±10%, 50HZ, 3PH+N+PE.



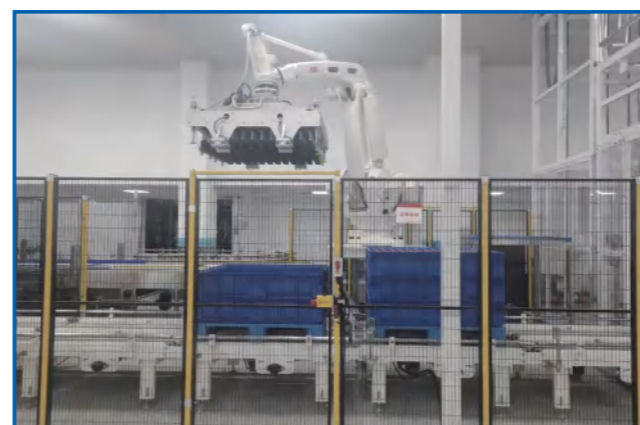
请用相机扫描
Pls scan the code with camera on phone

> 卸垛机系列>机器人卸垛机

>Depalletizer series>Robot depalletizer



请用相机扫描
Pls scan the code with camera on phone



装箱系列 / Carton packing series

> 装箱系列 > 伺服坐标装箱 > Carton packing series > Servo coordinate carton packing machine

功能用途 Application

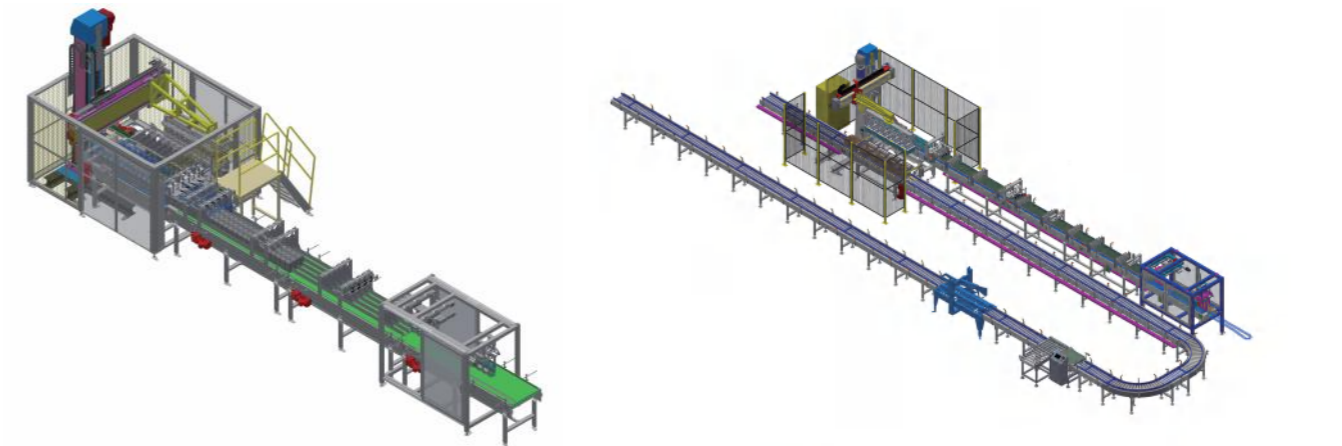
适用于于瓶、桶、罐、盒、袋等产品装箱，可应用于饮品、食品、药品、日化等行业生产线。

This device is used for packing products such as bottles, barrels, cans, boxes, and bags into cartons. It can be applied to production lines in industries of beverages, food, pharmaceuticals, and daily chemicals.

工作原理 Working principle

把包装、灌装好的产品(瓶\罐\桶\袋子)通过连续的抓装动作，按一定的排列方式将产品放置在成型后的箱子\框子内。

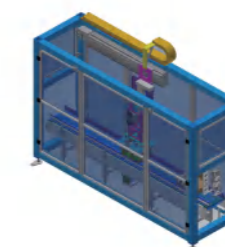
Pick the packed and filled products (bottles/cans/barrels/bags) and place them into the formed carton/crate in a certain arrangement through continuous gripping and placing actions.



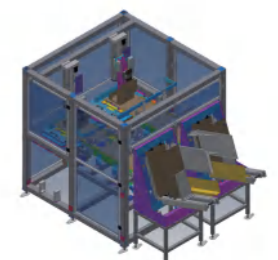
桶装箱
Barrels in cartons



瓶装箱
Bottles in cartons



纸箱封箱机
Carton glue sealing machine



纸箱热熔胶成型机
Carton forming machine

电器配置 ELECTRICAL CONFIGURATION

PLC	西门子	Siemens
变频器 VFD	丹弗斯	Danfoss
伺服电机 Servo motor	西门子	Siemens
光电传感 Photoelectric sensor	西克	SICK
气动组件 Pneumatic components	费斯托	FESTO
触摸屏 Touch screen	西门子	Siemens
低压电器 Low voltage apparatus	施耐德	Schneider
端子 Terminal	菲尼克斯	Phoenix
电机 Motor	SEW	



技术参数 TECHNICAL PARAMETER

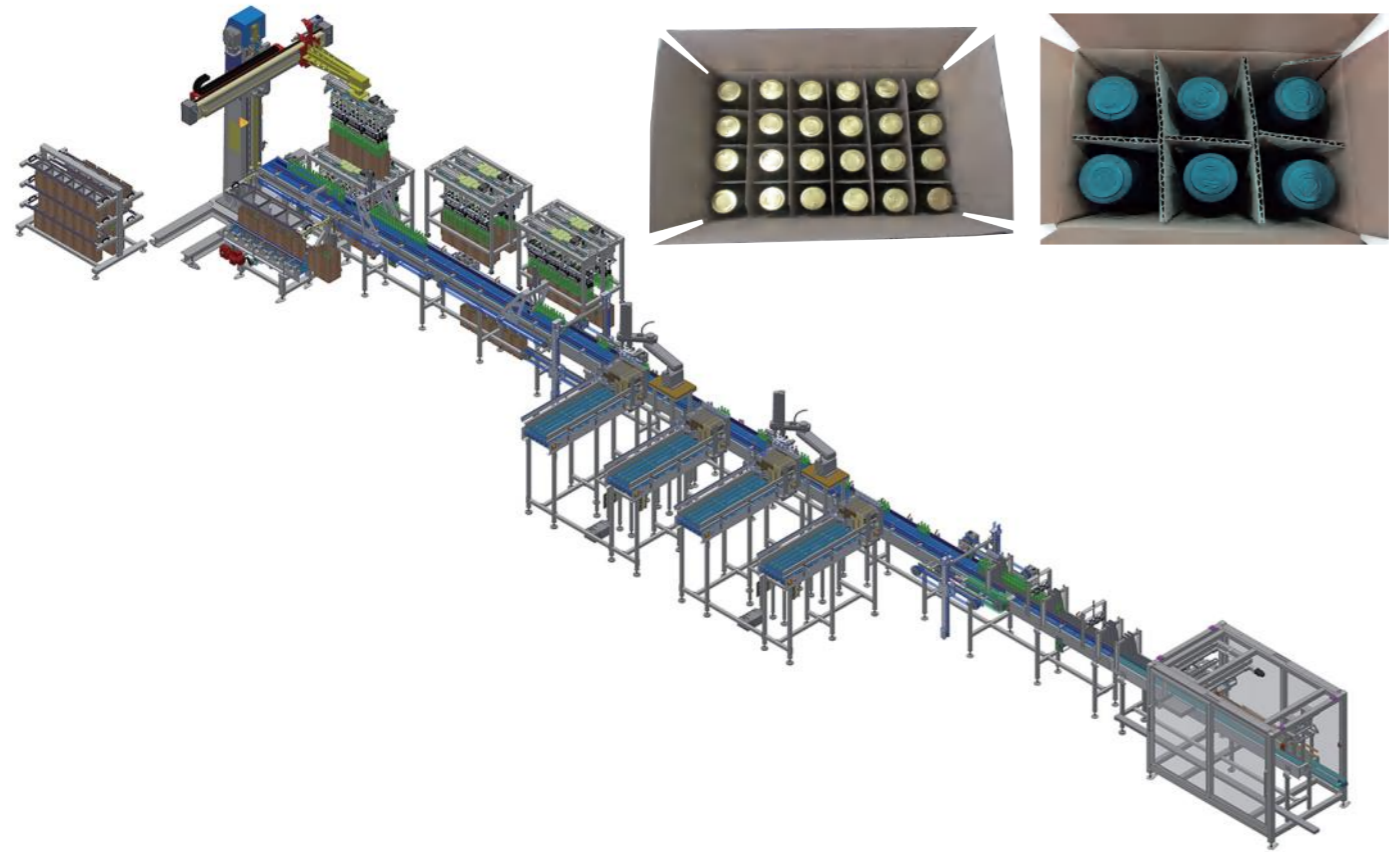
型号 Model	LI-CRP12/20/30/50
速度 Speed	12-50箱/分钟(cartons/min)
动力电源 Power supply	380AC±10%, 50HZ, 3PH+N+PE.



请用相机扫描
Pls scan the code with camera on phone

> 装箱系列> 伺服坐标装箱线+ 机器人装井字格

>Carton packing series>Servo coordinate carton packing line(with cardboard partition)



该生产线具备自动进料，自动加井字格，产品自动编组，自动装箱等功能。可根据工厂面积进行产线调整，提高生产效率，满足客户对生产过程和包装的各种要求。

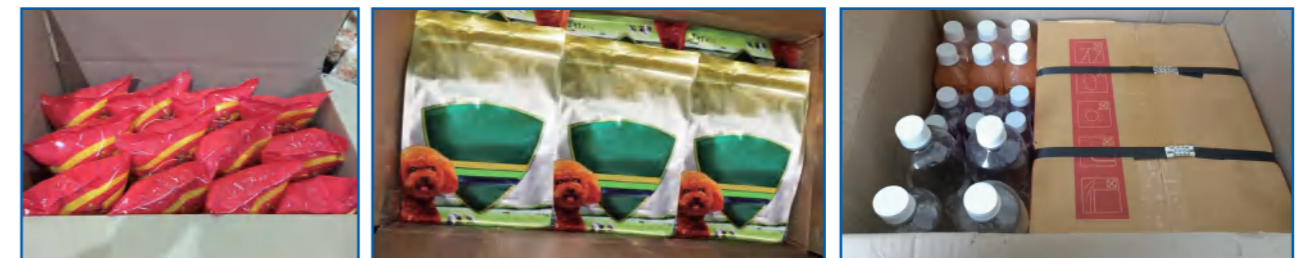
This production line realizes automatic product infeed conveying, automatic inserting cardboard partition, automatic product grouping, automatic carton packing, to improve the working environment, improve production efficiency and meet the requirements of customers on production process and packaging.



请用相机扫描
Pls scan the code with camera on phone

> 装箱系列> 机器人装箱

>Carton packing series>Robot carton packing machine

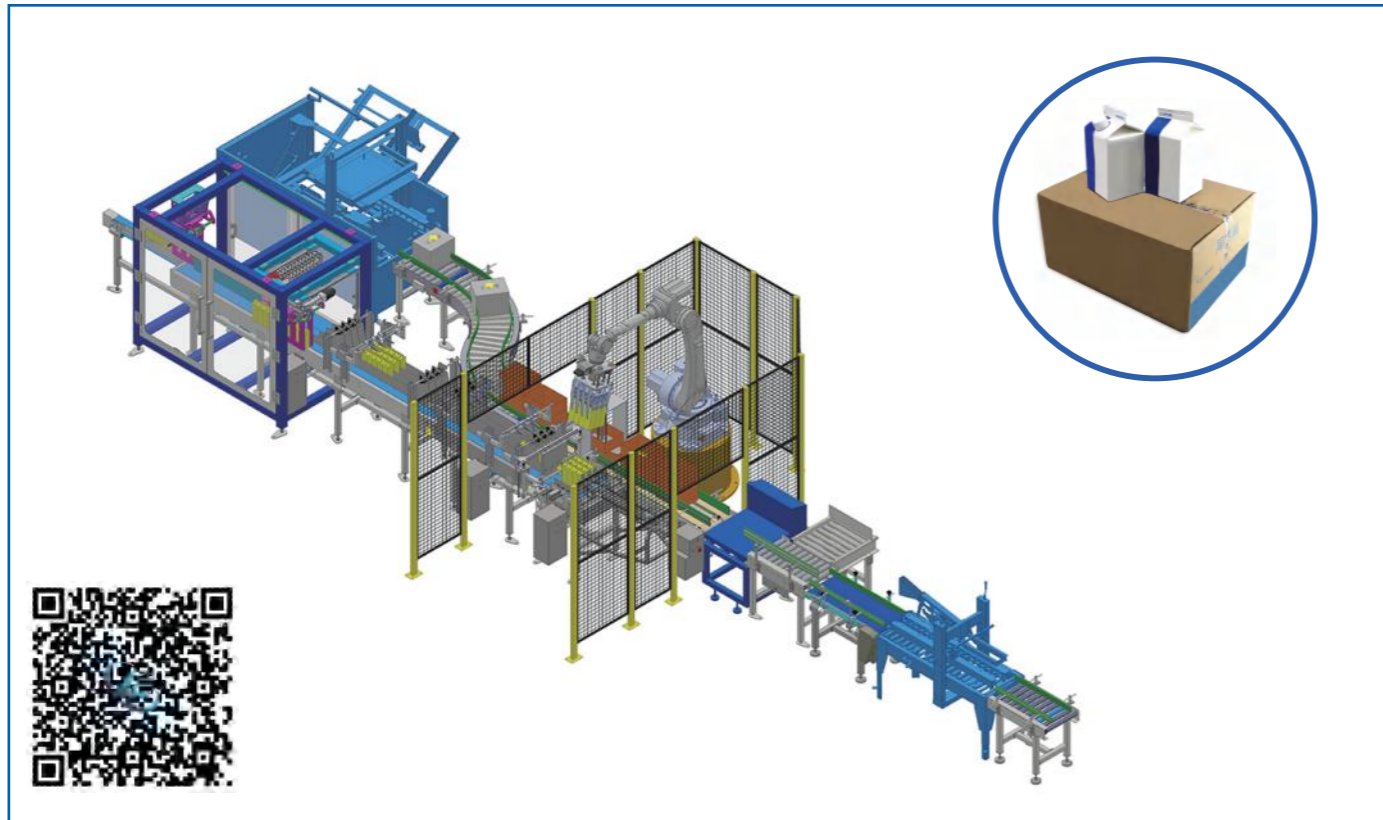


技术参数 TECHNICAL PARAMETER	
型号 Model	LI-RCP20/40/60
稳定速度 Stable speed	20-60箱/分钟(cartons/min)
动力电源 Power supply	380AC±10%, 50HZ, 3PH+N+PE.

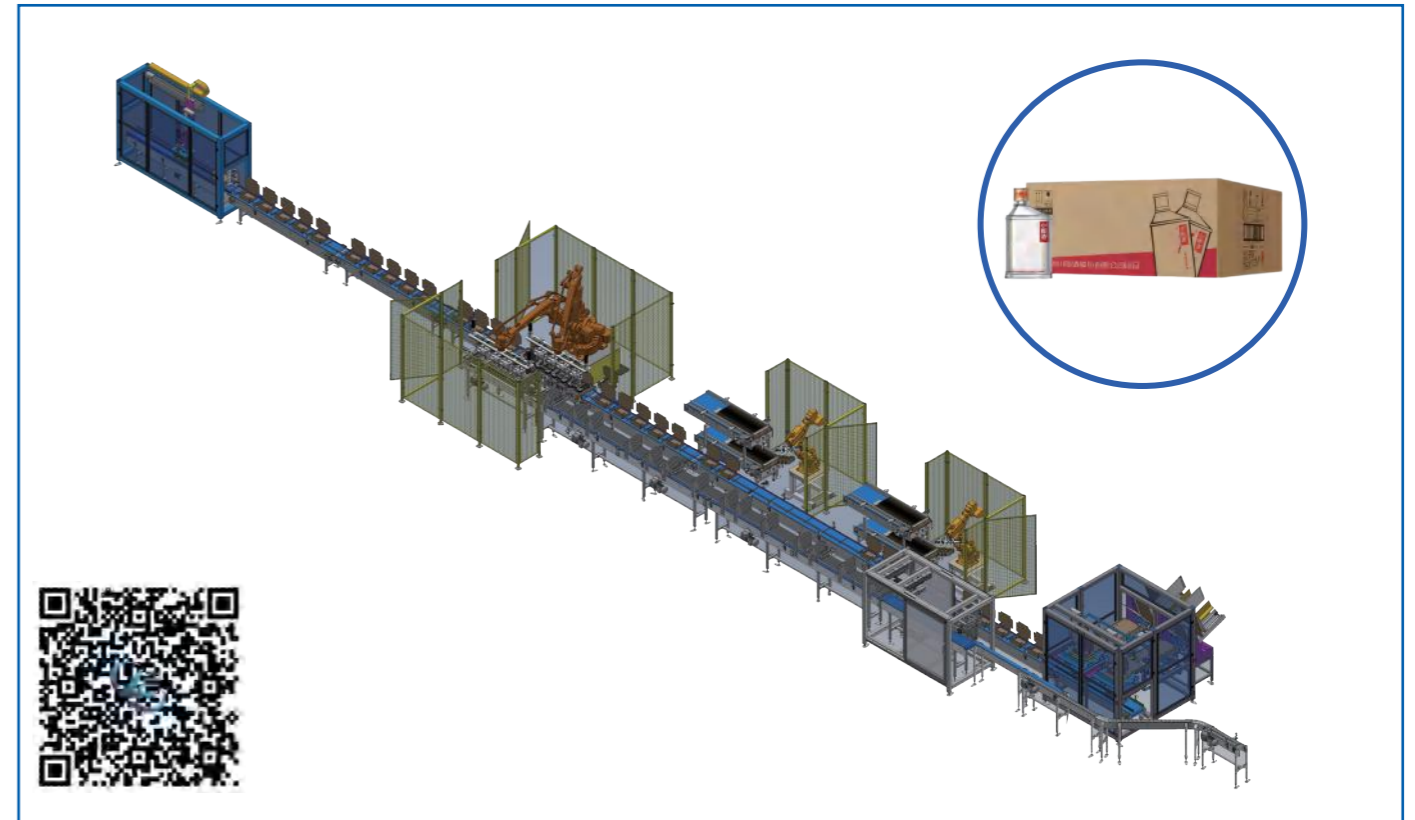


请用相机扫描
Pls scan the code with camera on phone

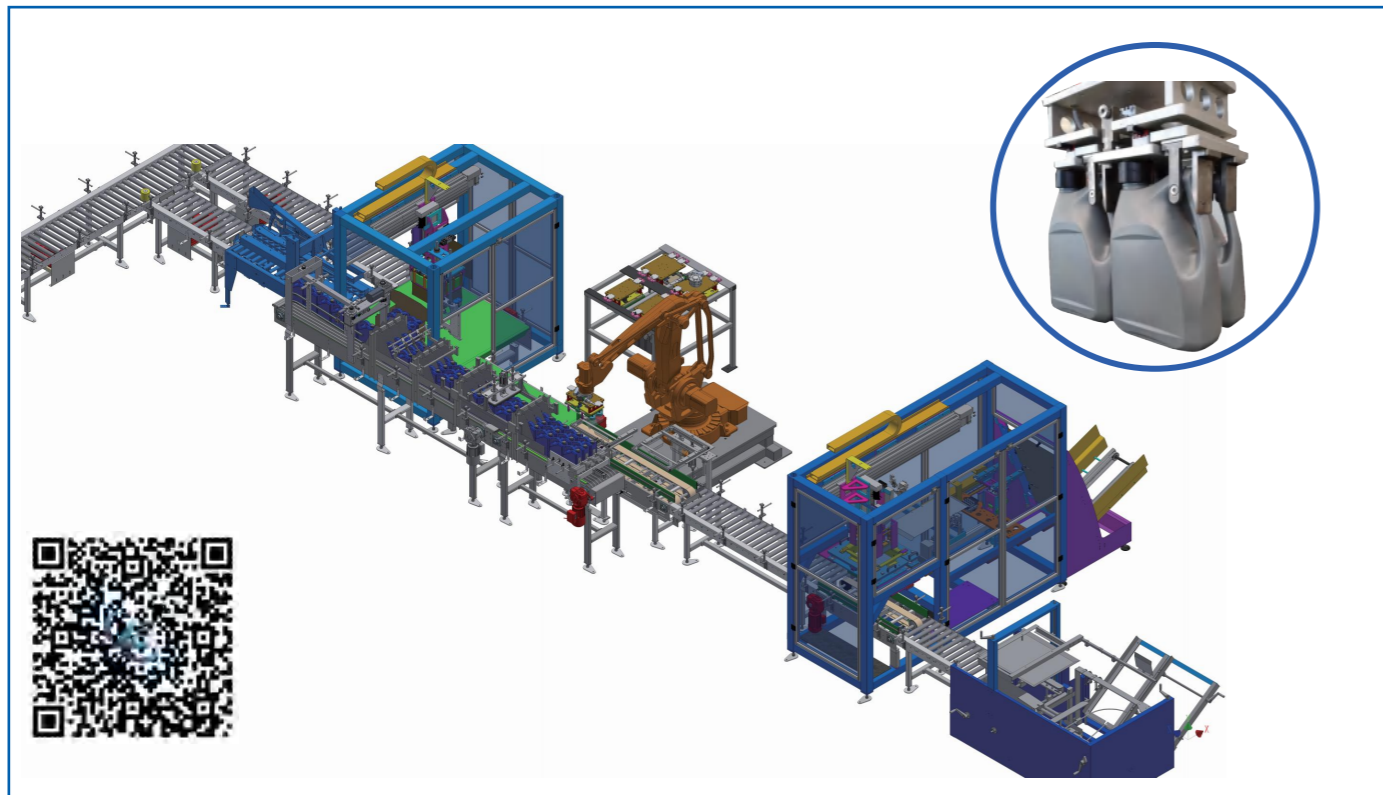
屋顶盒装箱线 Gable-top cartons case packing line



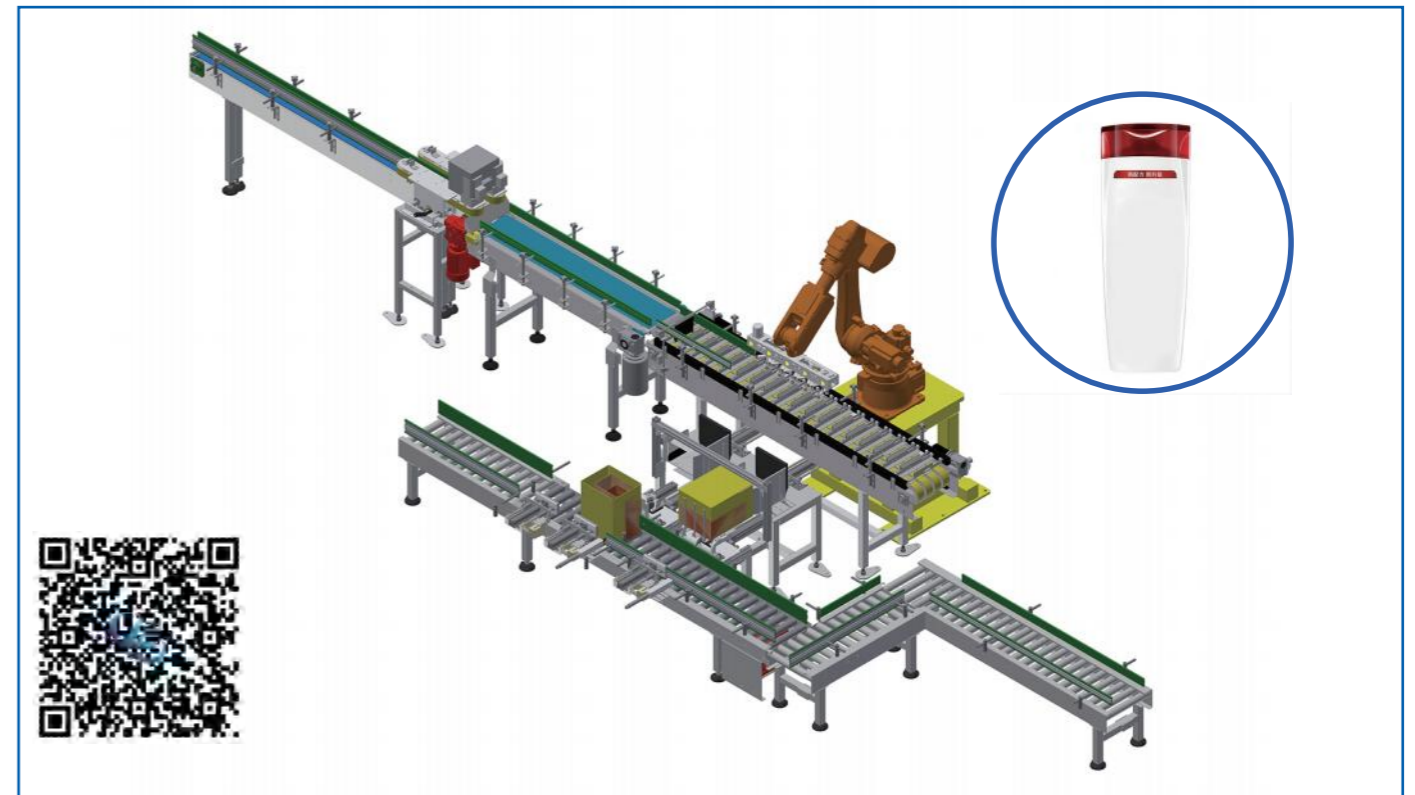
玻璃瓶装箱线 Glass bottles case packing line



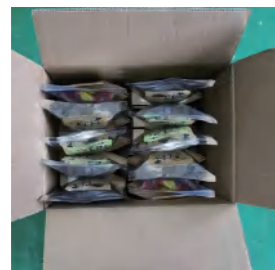
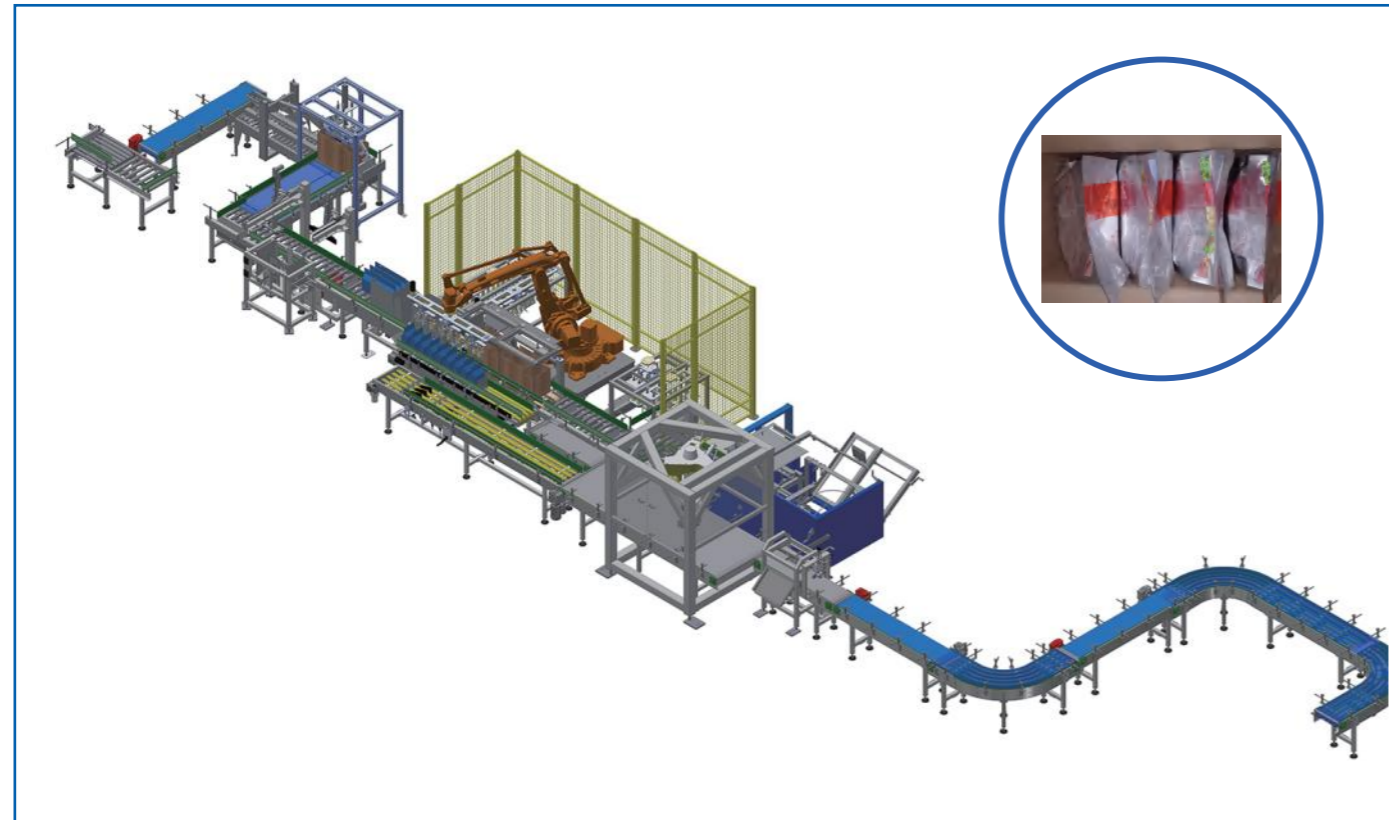
1.8L/3L/5L壶装产品装箱线 1.8L/3L/5L Pot product case packing line



异形瓶装箱线 Irregular Bottles case packing line



自立袋/水平袋装箱线 Doypack/Horizontal Bag case packing line



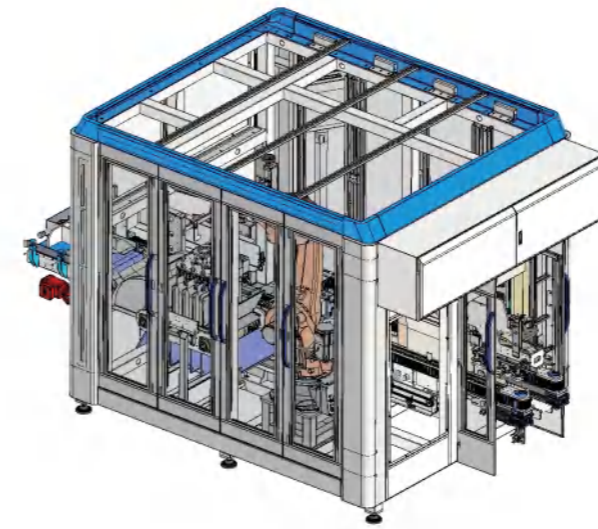
产品经由输送线送至袋自动排列机构处，装箱机器人通过定制化的夹具将产品按照客户要求有序的放置在开好的箱子里，每装完一箱完成，机械手会自动吸取一张隔板放置在装好产品的箱子顶部，自动封箱机会将完成的箱子封好输送至码垛工位。

The products are sent to the automatic bag arrangement mechanism through the conveyor line. The packaging robot picks and places the arranged products into the formed cases through customized gripper in an orderly manner according to customer requirements. After each case is completed, the robot arm will automatically suck a interlayer sheet and place it on the top of the box where the products are packed. The automatic sealing machine will seal the completed boxes and transport them to the palletizing station.



>装箱系列>开装封一体机

>Carton packing series > 3 in 1 monoblock case packing machine (case erector, case packer, case sealer)



工作原理 Working principle

开装封一体机是一款集开箱、装箱、封箱功能于一体的功能性设备：开箱采取真空吸盘吸取自动成型；装箱采用机器人或者伺服坐标式机械手抓取产品装箱；封箱采用折页封箱机构。

The integrates case erector, case packing machine, and case sealing machine. The case erecting adopts vacuum sucking to pick cardboard and form the case mechanically, case packing adopts robot or servo coordinate to drive gripper to pick products and place into case, case sealing adopts folding sealing mechanism.



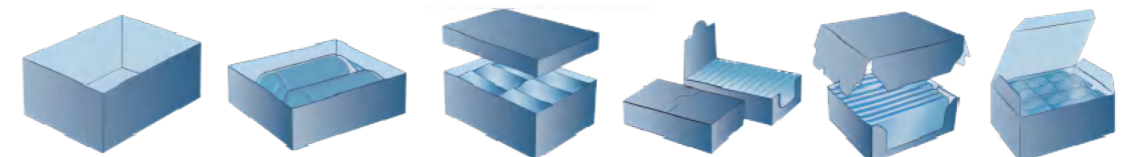
请用相机扫描

Pls scan the code with camera on phone

优点 Advantages

结构紧凑，集成度高，占地面积小，同时具有自动化程度高、装箱速度快、安全性高、操作简单、维修保养方便，可根据客户需求提供不同配置等特点，特别适合场地空间紧凑的布局应用。

This monoblock machine has a compact structure, high integration, and a small footprint. At the same time, it has the characteristics of high automation, fast packing speed, and high safety, easy operation, convenient maintenance, and high customization, especially suitable for the application of lightweight products in multiple industries such as food, daily chemical, and office supplies.



蜘蛛手机器人集成系统

Delta robot integrated system



功能用途 Application

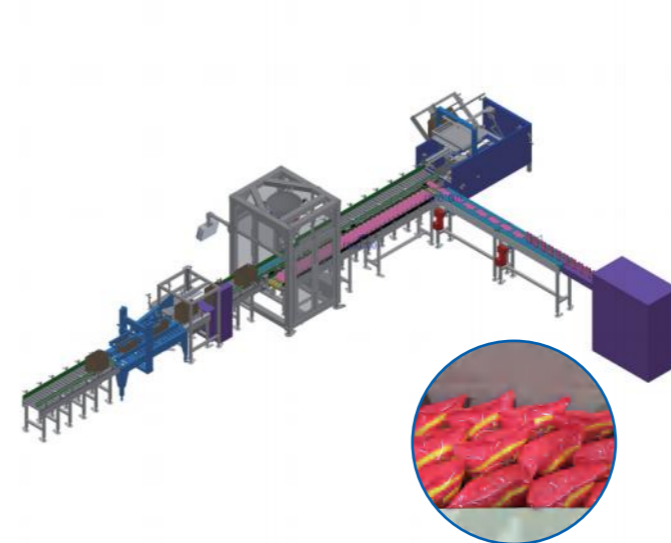
适用于固体奶茶、粉丝、方便面等杯装式、桶装式、袋装式无序内包装产品，分拣识别抓取投放到外包装内。

Suitable for sorting, identifying, and grabbing unordered inner packaging products in form of bottles, cups, barrels, bags, such as powder milk tea, vermicelli, instant noodles, etc., and place them inside the outer packing.

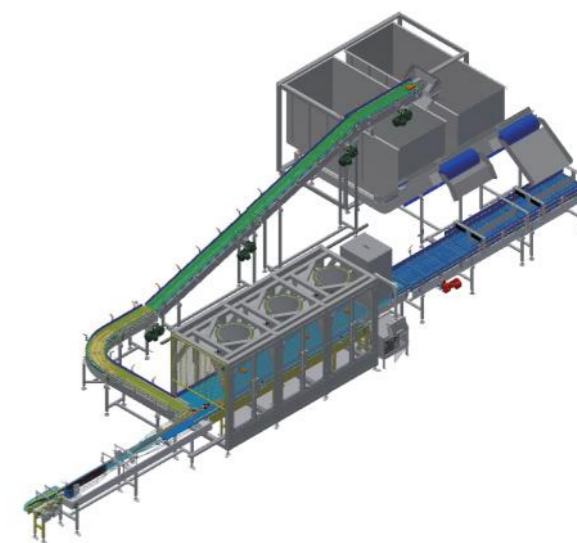
工作原理 Working principle

无序的内包装产品从产品料仓出料，通过伺服理料机理料后蜘蛛手视觉识别产品位置后抓取投放到相应的外包装中。

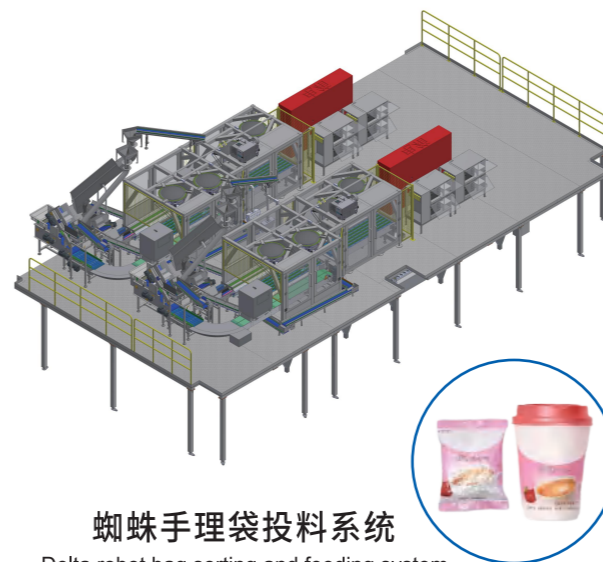
The unordered inner packaging products are discharged from the storage. After being sorted by the servo unscrambler and the product position is recognized by the visual system, and then the visual system will share the information with the spider robot, and the spider robot will grab and place the products into the corresponding outer packaging.



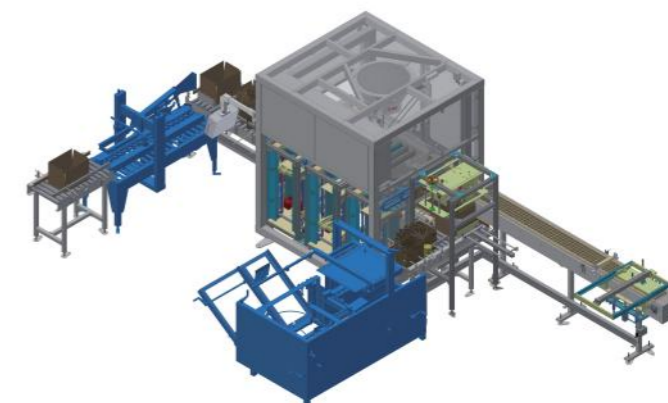
袋装产品装箱线
Bag products carton packing line



蜘蛛手理瓶系统
Delta robot bottles unscrambler



蜘蛛手理袋投料系统
Delta robot bag sorting and feeding system



自立袋装箱线
Doypack packing conveyor line

技术参数 TECHNICAL PARAMETER

型号 Model	LI-RUM200
稳定速度 Stable speed	200次/分钟 (pieces/min)
动力电源 Power supply	380AC±10%, 50HZ, 3PH+N+PE.



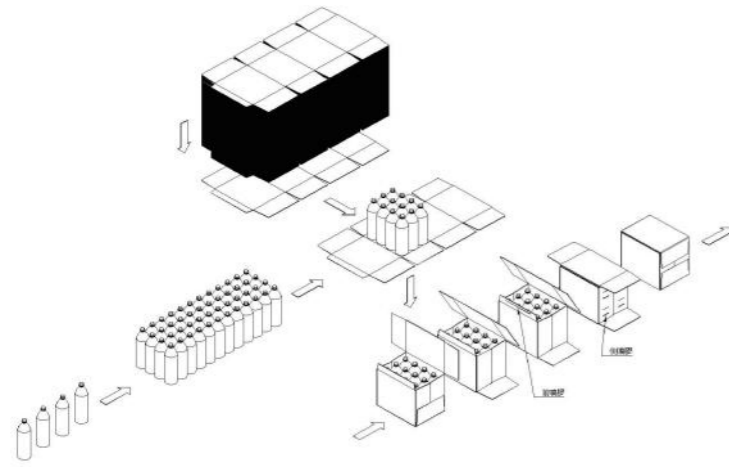
请用相机扫描
Pls scan the code with camera on phone

热熔胶纸包机系列 / Carton packing series

功能用途 Application

适用于袋、250ML~5L塑料瓶/桶、自立袋、盒及罐等产品的自动裹包装箱，广泛应用于饮品、药品、日化等行业生产线。

This machine is used for automatic carton packaging of bags, 250ML~5L plastic bottles/barrels, doypack, boxes, and cans, widely used in production lines such as beverages, pharmaceuticals, and daily chemicals industries etc.



工作原理 Working principle

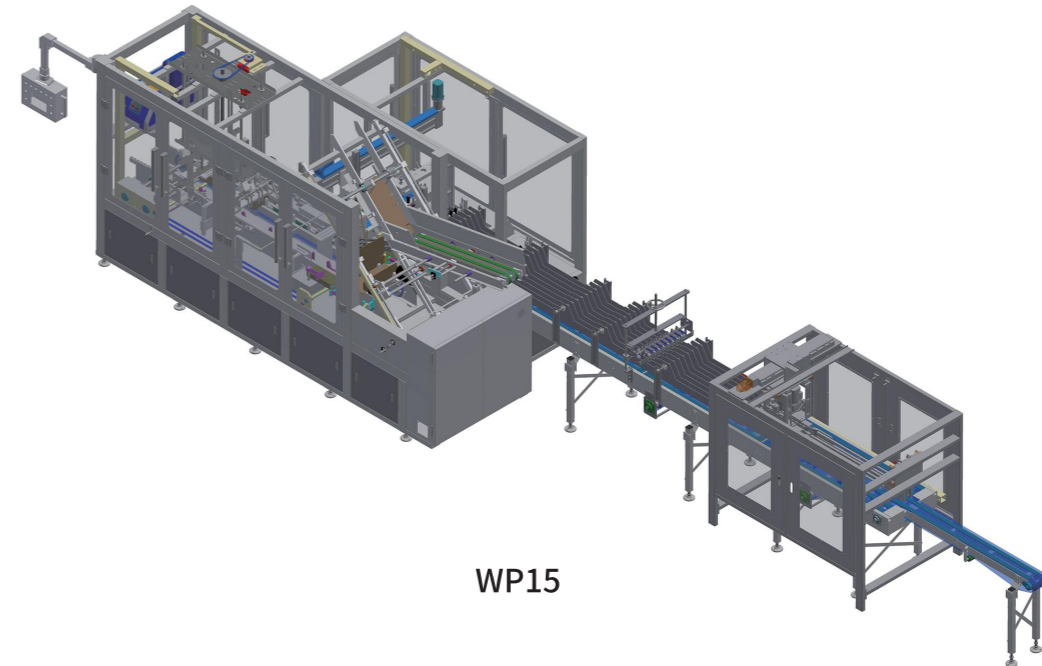
产品进入包装机进料输送机构，经入口输送带分道后进入分瓶输送带，分道板把产品预分成设定的包装格式（如4*6/6*8等），同时吸纸机构把纸板从纸板仓放到预成型工位，编组好的产品通过侧推或者跌落方式进入预成型纸箱，然后预成型纸箱进入下一个工位，由折翼机构、喷胶设备等，把纸板紧密地裹在产品外表面，形成纸箱形状，便于下一工位码垛工作。

The products are transported to the entrance conveyor of this packing machine, and after that the products will be organized into the group (of 4*6/6*8 etc) by dividing plate. At the same time, the cardboard is sucked by the suction mechanism from the cardboard storage to the carton pre-forming station, grouped products will be sent to the pre-formed carton by dropping type mechanism/side pushing mechanism. And then the pre-formed carton go to the next station, the cardboard will be tightly wrapped around the product by the folding mechanism, glue spraying equipment, which is convenient for carton palletizing at the next workstation.

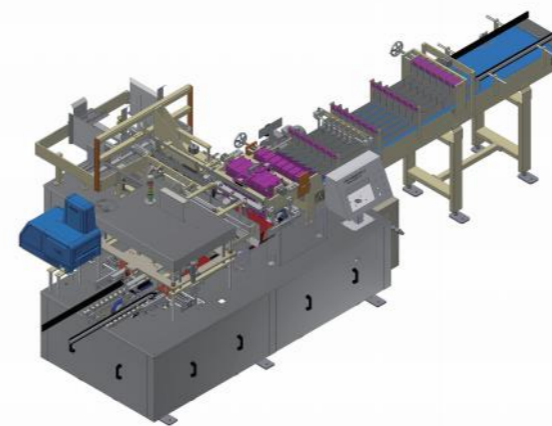
电器配置 ELECTRICAL CONFIGURATION

PLC	西门子	Siemens
变频器 VFD	丹弗斯	Danfoss
伺服电机 Servo motor	西门子	Siemens
光电传感 Photoelectric sensor	西克	SICK
气动组件 Pneumatic components	费斯托	FESTO
触摸屏 Touch screen	西门子	Siemens
低压电器 Low voltage apparatus	施耐德	Schneider
端子 Terminal	菲尼克斯	Phoenix
电机 Motor	SEW	

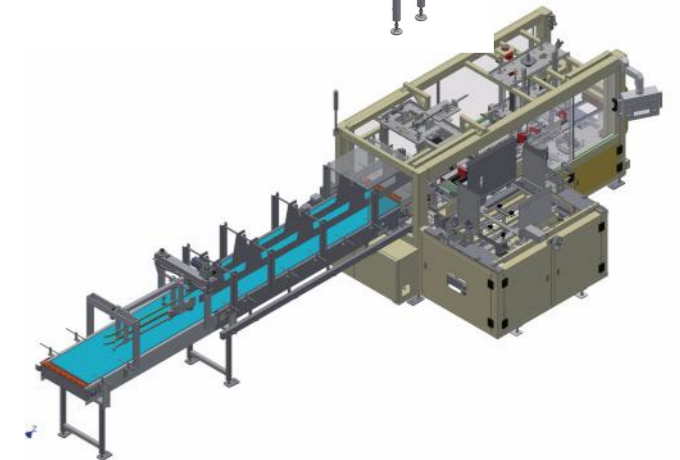
>热熔胶纸包机系列>侧推式纸包机/落差式纸包机 >Wraparound case packing machine >Side pushing wraparound case packer/ Drop type wraparound case packer



WP15



WP32



WP25

技术参数

TECHNICAL PARAMETER

型号 Model	LI-WP15	LI-WP25	LI-WP32
速度 Speed	15箱/分钟 (cartons/min)	25-28箱/分钟 (cartons/min)	30箱/分钟 (cartons/min)
装箱方式 Packing method	侧推式装箱 Side pushing	落差式装箱 Drop type	落差式装箱 Drop type
动力电源 Power supply	380AC±10%, 50HZ, 3PH+N+PE.		

侧推式装箱
Side pushing

请用相机扫描
Pls scan the code with camera on phone

落差式装箱
Drop type

请用相机扫描
Pls scan the code with camera on phone

> 热熔胶纸包机系列 > 高速直线式纸包机

>Wraparound case packing machine >High speed linear case packing machine



功能用途 Application

本设备用于矿泉水；碳酸饮料；果汁；酒类；酱制品；乳制品；保健品；宠物食品；洗涤剂；食用油等行业的推出的罐装、PET瓶装、玻璃瓶装、盒子、利乐包以及其它硬质包装容器包装的产品纸箱裹包。

This wraparound case packing machine is used for can, PET bottle, glass bottle, gable boxes and other hard packaging containers in the industries of mineral water, carbonated beverages, juice, alcohol, sauce products, dairy products, health products, pet food, detergents, edible oils, etc.

工作原理 Working principle

产品进入包装机进料输送机构，经入口输送带分道后进入分瓶输送带，由双伺服循环交替分瓶机构把产品预分成设定的包装格式（如3*5/4*6等），分瓶输送机构和推杆机构把每组产品输送到下一工位，同时吸纸机构把纸板从纸板仓放到纸板输送带机构上，输送到下一工位与对应的一组产品结合，由折翼机构、喷胶设备、成型机构等，把纸板紧密地裹在产品外表面，形成纸箱形状，便于下一工位码垛工作。

The products are transported to the entrance conveyor of this packing machine, and after that product will be organized into the group (of 3*5/4*6 etc) by double servo circular bottle splitting mechanism. The bottle splitting mechanism and pushing rod will transport each group of products to the next workstation. At the same time, the cardboard is sucked by the suction mechanism from the cardboard storage onto the cardboard conveyor, and then be transported to the next workstation to combine with the corresponding group of products. The cardboard is tightly wrapped around the product by the folding mechanism, glue spraying equipment, shape forming mechanism, which is convenient for carton palletizing at the next workstation.

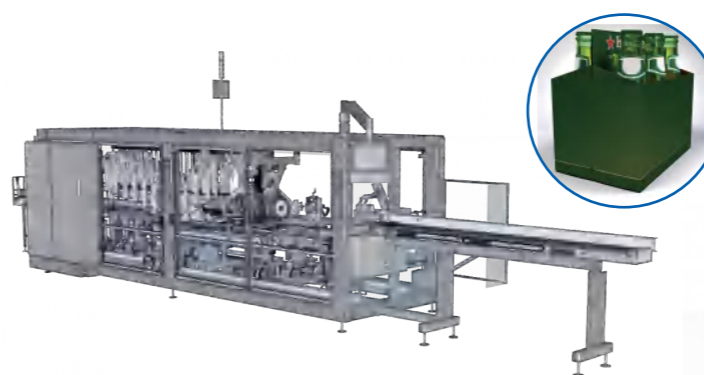
电器配置 ELECTRICAL CONFIGURATION

PLC	西门子	Siemens
变频器 VFD	丹弗斯	Danfoss
伺服电机 Servo motor	Elau-施耐德	Elau-Schneider
光电传感 Photoelectric sensor	西克	SICK
气动组件 Pneumatic components	费斯托	FESTO
触摸屏 Touch screen	西门子	Siemens
低压电器 Low voltage apparatus	施耐德	Schneider
端子 Terminal	菲尼克斯	Phoenix
电机 Motor	SEW	



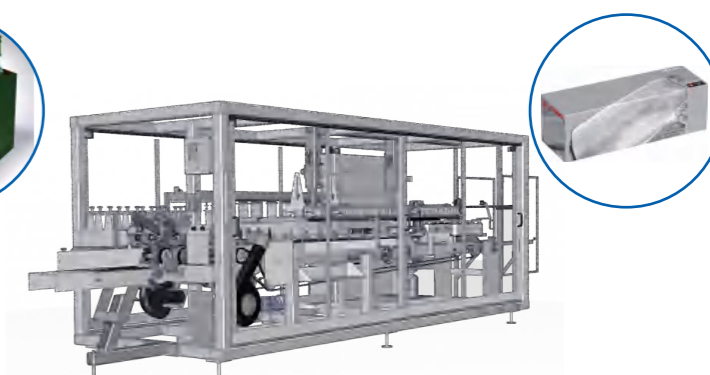
> 热熔胶纸包机系列 > 卡包机系列

>Wraparound case packing machine >Cluster packer



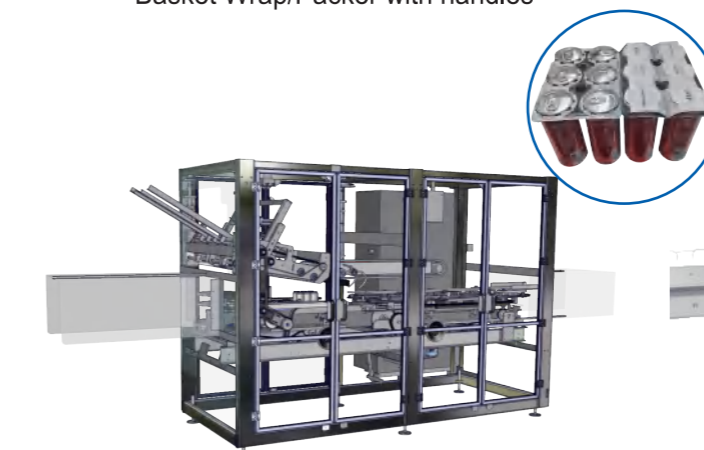
提篮机

Basket Wrap/Packer with handles



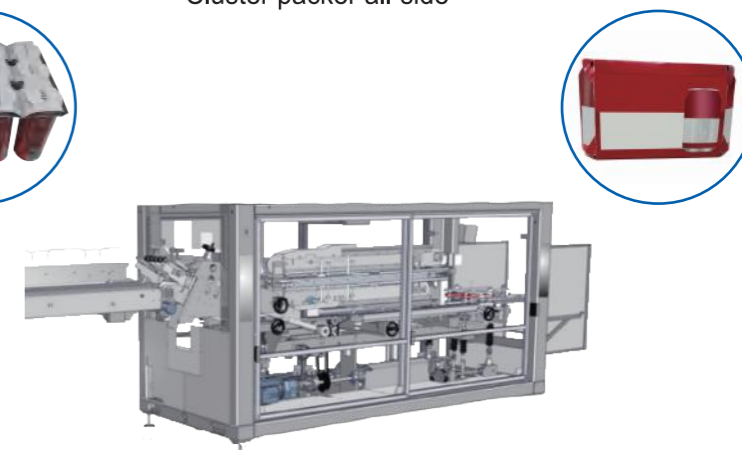
全包机 (冰箱装)

Cluster packer all-side



卡脖式包装机

Neck-through (NT)



卡包机

Mutipack (cardboard sleeves with flaps)

技术参数

TECHNICAL PARAMETER

类型 Type	全包机 (冰箱装) Cluster packer all-side	卡包机 Mutipack (cardboard sleeves with flaps)	提篮机 Basket Wrap/Packer with handles	卡脖式包装机 Neck-through (NT)
型号 Model	SM-DS-120/250	MJPS-120/200/250	MBT-120	MJCT-180
主要包装容器 Main packaging containers	易拉罐, 玻璃瓶 PET cans, glass bottle, PET	易拉罐 cans	玻璃瓶, PET, 铝瓶 glass bottle, PET, aluminum bottle	易拉罐, PET瓶, 玻璃瓶 cans, PET bottle, glass bottle
稳定速度 Stable speed	120-220ppm	60-220ppm	60-120ppm	120-190ppm
机器重量 Machine weight	8000KG	6500KG	7500KG	6200KG
机器尺寸 Machine dimension(LxWxH)	11.77mx2.16mx2.24m	8.2mx1.8mx16m	8.5mx1.9mx2.2m	6.5mx1.75mx2.3m



请用相机扫描
Pls scan the code with camera on phone

膜包机系列 / Shrink film wrapping machine



功能用途 Application

本设备用于矿泉水；碳酸饮料；果汁；酒类；酱制品；乳制品；保健品；宠物食品；洗涤剂；食用油等行业的推出的罐装、PET瓶装、玻璃瓶装、盒子、利乐包以及其它硬质包装容器包装的产品纸箱裹包。

This wraparound case packing machine is used for can, PET bottle, glass bottle, gable boxes and other hard packaging containers in the industries of mineral water, carbonated beverages, juice, alcohol, sauce products, dairy products, health products, pet food, detergents, edible oils, etc.



工作原理 Working principle

产品由前段输送带输送到包装机入口输送机构，经入口输送带分道后进入分瓶输送带，由双伺服循环交替分瓶机构把产品预分成设定的包装格式（如4*3/6*4等），分配输送机构和推杆机构把每组产品输送到下一工位，同时膜卷由送膜切膜机构预先切成设定的长度输送带下一工位与对应的一组产品结合，由裹膜机构和皮带输送机构把薄膜裹在产品一周，进入循环热风烤炉设备进行薄膜加热收缩，在出口经过冷风吹过冷却后，薄膜收紧，把一组产品紧密地裹在一起便于下一工位码垛工作。

The products are transported to the entrance conveyor of this packing machine, and after that product will be organized into the group (of 3*5/4*6 etc) by double servo circular bottle splitting mechanism. The bottle splitting mechanism and pushing rod will transport each group of products to the next workstation. At the same time, the film roll will supply the film to the cutting knife which will cut the film according to designed length and be transported to the next workstation to be wrapped around the corresponding group of products by film wrapping mechanism. The film wrapped product enters the circulating hot air oven for shrinking. After being cooled by cold air at the outlet, the film is tightened. A group of products are tightly wrapped together for the next workstation stacking work.

电器配置 ELECTRICAL CONFIGURATION

PLC	西门子	Siemens
变频器 VFD	丹弗斯	Danfoss
伺服电机 Servo motor	Elau-施耐德	Elau-Schneider
光电传感 Photoelectric sensor	西克	SICK
气动组件 Pneumatic components	费斯托	FESTO
触摸屏 Touch screen	西门子	Siemens
低压电器 Low voltage apparatus	施耐德	Schneider
端子 Terminal	菲尼克斯	Phoenix
电机 Motor	SEW	



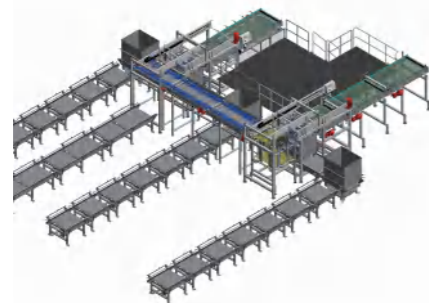
请用相机扫描
Pls scan the code with camera on phone

技术参数 TECHNICAL PARAMETER

型号 Model	LI-SF60/80/120/160
速度 Speed	60/80/120/160PPM
动力电源 Power supply	380AC±10%, 50HZ, 3PH+N+PE.

全自动装卸笼系统

Automatic retort basket loading and unloading system



功能用途 Application

适用于各种需要二次灭菌的PET/玻璃瓶、各类玻璃罐/铁罐/易拉罐、袋子等产品的装卸笼。

This loading and unloading machine works for various PET/glass bottles, glass jars/tinplate, cans/aluminum cans, bags, etc that need secondary sterilization.

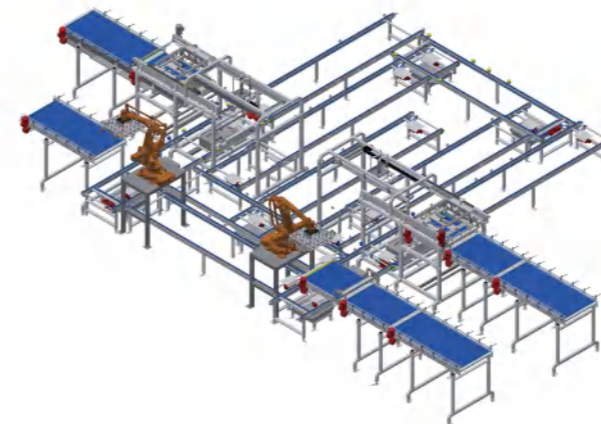
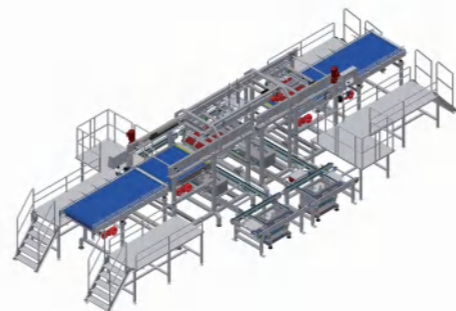
工作原理 Working principle

本机可实现自动装笼、自动加隔板，自动进出釜、自动卸笼功能、自动收集隔板。

生产时，待杀菌产品通过输送带输送到装笼机，产品会按照编好的程序自动整列，当产品完成整层的排列后，夹具会将整层产品移至笼框位，吸放隔板。逐层进行，装满整笼再由链条输送/台车搬运进釜杀菌，杀完菌后，杀菌釜会把笼框输送到链条线/台车上，自动运输至卸笼机，卸笼机会将产品逐层卸至产品输送上，实现全自动无人化生产。

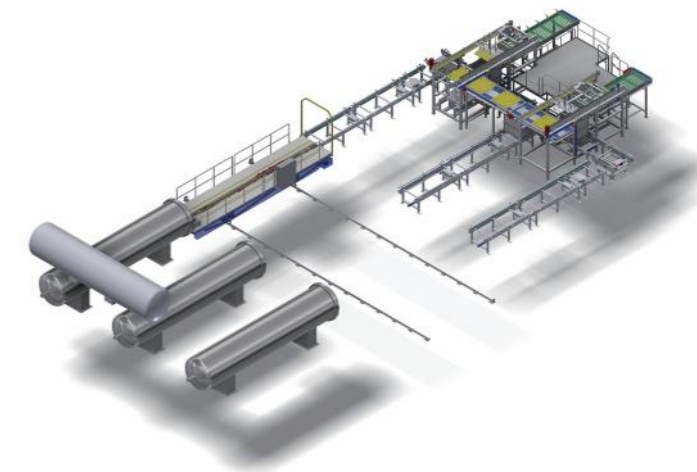
This machine can achieve automatic cage loading, automatic pad loading, automatic transportation into/out retort, and automatic cage unloading, automatic pad unloading functions.

During the production, the sterilized products are transported to loading machine by conveyor belts, the products will be automatically arranged according to the program. When the entire layer of product arrangement is completed, the products will be moved to the cage by gripper, and the interlayer pad would be sucked and placed into the cage layer by layer. After the entire cage is filled, the cage will be transported by chain conveyor/shuttle to the retort for sterilization. After sterilization, the cages are automatically transported to unloading machine through chain conveyor/shuttle. And then, the unloading machine will unload the products layer by layer to the product conveyor, to achieve fully automatic and unmanned production.



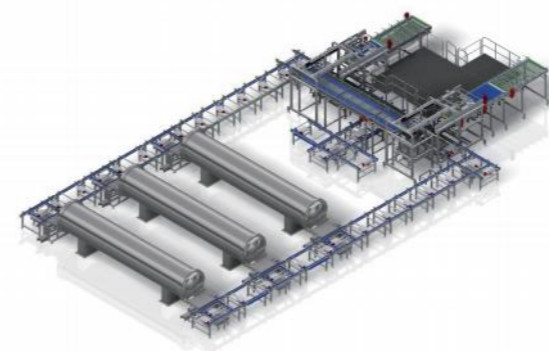
机器人装卸笼系统

Robot Retort basket loading and unloading system



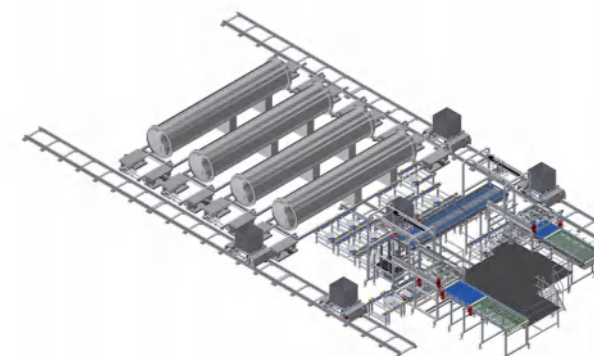
ZXL800 配有定制台车，全自动进釜

ZXL800 with customized shuttle, full automatic entering retort



全自动装卸笼（前进后出）+链条输送机

Automatic retort basket loading and unloading (Front inlet and back outlet) +chain conveyor



全自动装卸笼系统+RGV小车

Automatic retort basket loading and unloading system + RGV vehicle

电器配置 ELECTRICAL CONFIGURATION

PLC	西门子	Siemens
变频器 VFD	丹弗斯	Danfoss
伺服电机 Servo motor	西门子	Siemens
光电传感 Photoelectric sensor	西克	SICK
气动组件 Pneumatic components	费斯托	FESTO
触摸屏 Touch screen	西门子	Siemens
低压电器 Low voltage apparatus	施耐德	Schneider
端子 Terminal	菲尼克斯	Phoenix
电机 Motor	SEW	



请用相机扫描
Pls scan the code with camera on phone

技术参数

TECHNICAL PARAMETER

型号 Model	LI-ZXL400/600/800/1200
整机速度 Whole machine speed	400/600/800/1200 件产品/分钟(product per minute)
动力电源 Power supply	380AC±10%, 50HZ, 3PH+N+PE.

立库系统 / Automated storage and retrieval (AS/RS)

功能用途 Application

立库系统可以实现物料自动供应、立体存储、输送和分拣等自动化过程，从而实现生产、包装、仓储、物流的一体化和智能化，极大提高出入库效率。

Automated storage and retrieval (AS/RS) can achieve automation processes such as automatic product supply, 3D storage, conveying, and sorting, thereby achieving the integration and intelligence of production, packaging, warehousing, and logistics, greatly improving the efficiency of warehouse input and output.

优势 Advantage

自动化立体库可作为高速、高密度缓冲存储，替代传统的固定货架，在保持紧凑的占地面积的同时，通过垂直存储实现最大化利用空间，可以移动和存储放置标准料箱和托盘中的货物或部件；通过多种形式的出入库输送和拣选系统，实现高效快速的部件拣选并自动入库。

Automatic AS/RS system can replace traditional fixed shelf as a high-speed, high-density buffering storage. While maintaining a compact floor area, it maximizes space utilization through vertical storage. It can move and store goods or components placed in standard cartons and pallets with cargo, through various forms of warehouse input and output transportation system and sorting systems, it can achieve efficient and fast component sorting and automatic warehousing.

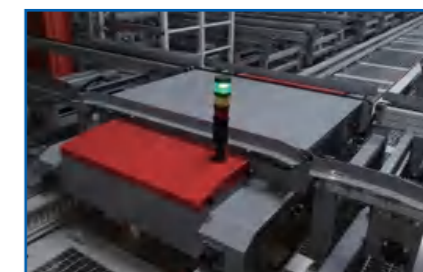
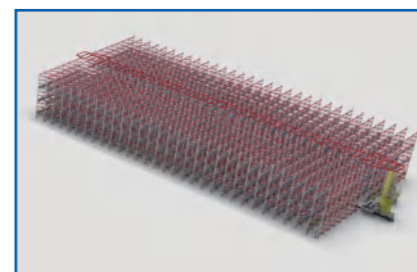
应用领域 Application field

- 食品行业 Food Industry
- 饮料行业 Beverage Industry
- 酒类行业 Alcohol industry
- 日化用品行业 Household products industry

提供前期技术参数分析和项目工程咨询规划
Provide preliminary technical parameter analysis and project consultation and plan
提供定制化整厂物流自动化解决方案
Provide solutions for customized factory logistics automation
完整的设备硬件和软件系统保证项目实施
Complete equipment's hardware and software system to ensure project's implementation

配备智能软件系统 Equipped with intelligent software system:

LI-WMS、LI-WCS



堆垛机自动化立体库
Automatic 3D storage for stacker crane

密集自动化立体库
Intensive automatic 3D warehouse

四向车+密集自动化立库
Four-way shuttle intensive automated warehouse system

堆垛机+双向穿梭车自动化立库
Stacker + two-way shuttle automated warehouse

AGV输送系统
AGV conveying system

环穿系统
Circular shuttle system

中控中心
Central control center

自动装车系统
Automatic loading system

WHOLE LINE PROJECT

整线工程

- 本产线根据客户产品的规格尺寸、包装工艺（含产品线速度及工序）进行非标定制；
- 基于工厂实际面积，产线规划调整设计方案，设计立体产线能极大优化空间利用率；
- 该产线全设备自动化操作，可实现24小时不间断连续作业，生产线的工作效率得到提高；

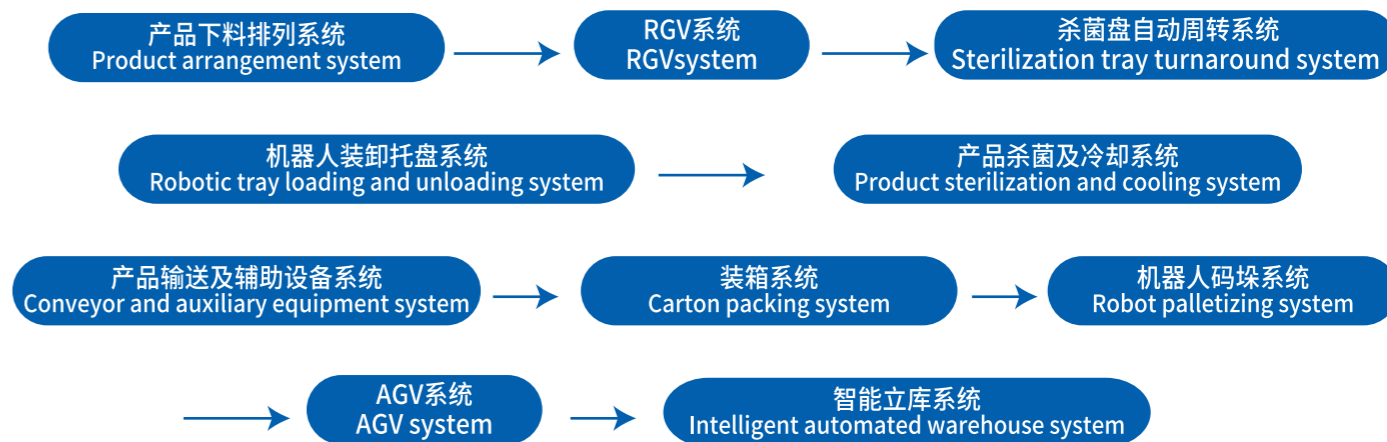
- This production line is customized according to non-standard products based on the specifications, dimensions, packaging technology (including production speed and working procedure) ;
- Design scheme based on the actual area of the factory and plan of the production line. The design of 3D production line can greatly optimize space utilization;
- The production line is fully automatic and can achieve 24-hour uninterrupted continuous operation, which improves the efficiency of the production line;



请用相机扫描
Pls scan the code with camera on phone



请用相机扫描
Pls scan the code with camera on phone



更多整线案例请参看
For more videos of complete lines, please scan



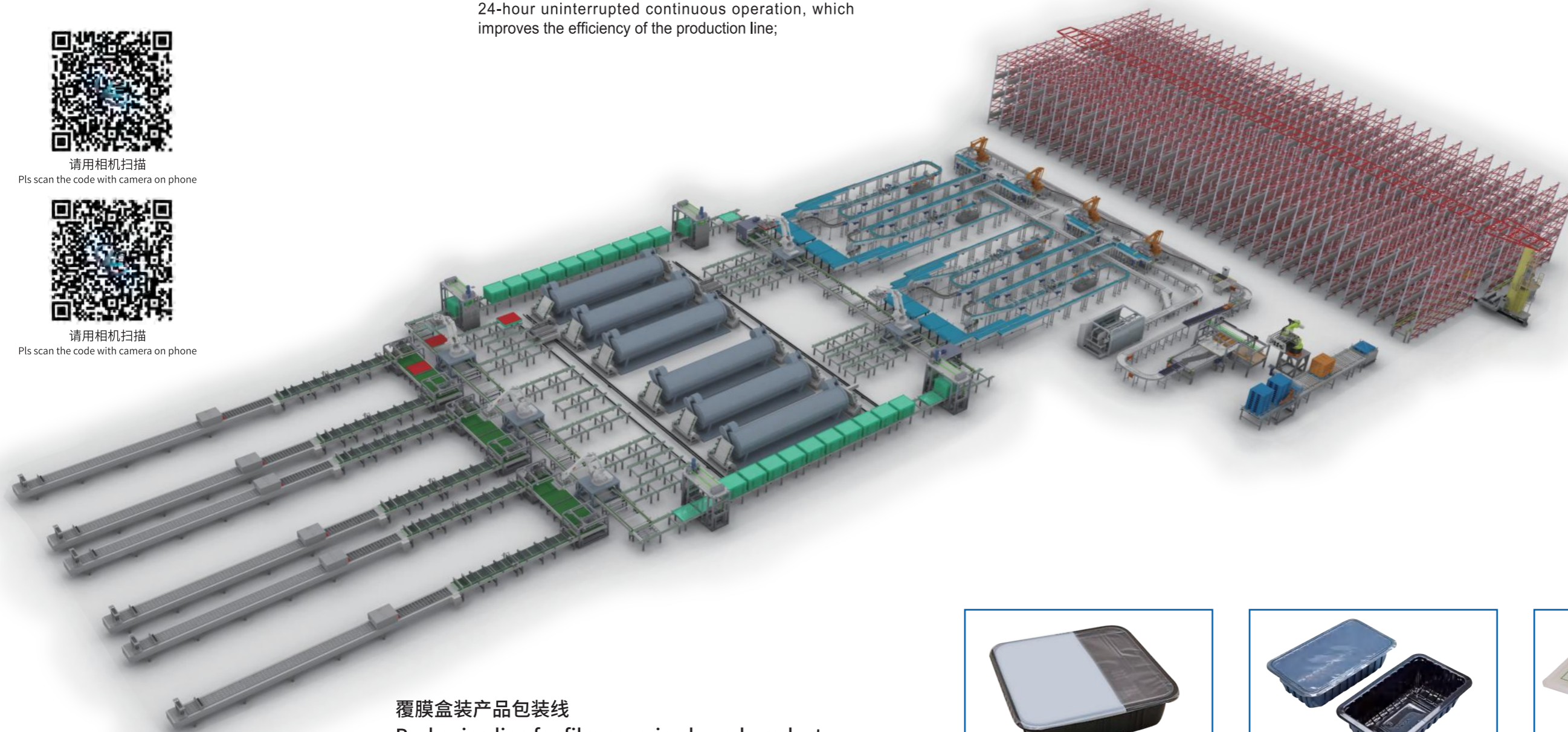
请用相机扫描
Pls scan the code with camera on phone



请用相机扫描
Pls scan the code with camera on phone



请用相机扫描
Pls scan the code with camera on phone



覆膜盒装产品包装线
Packaging line for film covering boxed products



纸箱自动装车系统（配备AMR履带车）

Automatic container loading system (equipped with AMR tracked vehicle)

创新 Innovation

集成品分拣、输送、监测、建模、车厢堆码于一体的自动作业新模式；
可以根据不同形式（包括车厢长度、宽度、高度以及是否带有前置转向平台）的实现成品箱子的自动卸垛、装车；
A new automatic operation mode that integrates sorting, conveying, monitoring, modeling, and container stacking of finished products;
Automatic pallet unloading and container loading of cartons can be achieved according to different forms (including container length, width, height, and whether there is a front turning platform);

高效 Efficient

3D成像识别技术辅助，实现产品高效识别，装车效率最大化，显著减少物流作业人员、降低劳动强度以及装货时间。
3D imaging recognition technology assists in achieving efficient product identification, maximizing container loading efficiency, significantly reducing logistics personnel, labor intensity, and loading time.

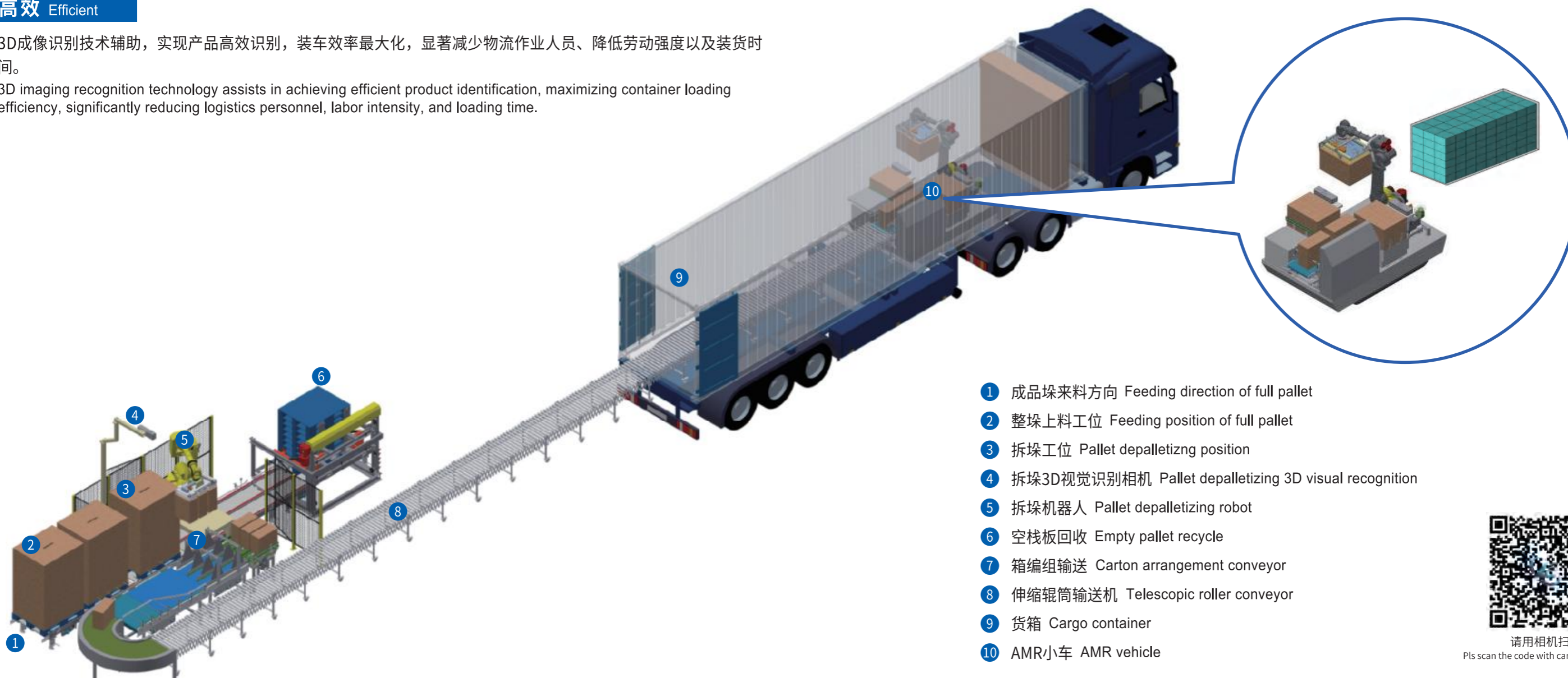
智能 Intelligence

AMR小车装车系统取代原先叉车装车和人工装车，及时计算装车是否会碰撞、箱子是否歪斜、破损，实现装车自动化、信息化，整线互通互连。

The AMR loading system replaces the previous forklift loading and manual loading, timely calculating whether there will be collisions during loading, whether the box is tilted or damaged, achieving automated and informationized loading, and interconnecting the entire line.

安全 Security

运用算法对箱子进行精确定位和抓取，避免出现损坏产品的现象，保证产品安全；
自动化的封闭作业环境，减少了不安全的因素，确保作业人员工作环境更安全；
Using algorithms to accurately locate and grasp the box, to avoid damage the box and ensure product safety;
An automated closed work environment reduces unsafe factors and ensures a safer working environment for workers;



- ① 成品垛来料方向 Feeding direction of full pallet
- ② 整垛上料工位 Feeding position of full pallet
- ③ 拆垛工位 Pallet depalletizing position
- ④ 拆垛3D视觉识别相机 Pallet depalletizing 3D visual recognition
- ⑤ 拆垛机器人 Pallet depalletizing robot
- ⑥ 空栈板回收 Empty pallet recycle
- ⑦ 箱编组输送 Carton arrangement conveyor
- ⑧ 伸缩辊筒输送机 Telescopic roller conveyor
- ⑨ 货箱 Cargo container
- ⑩ AMR小车 AMR vehicle



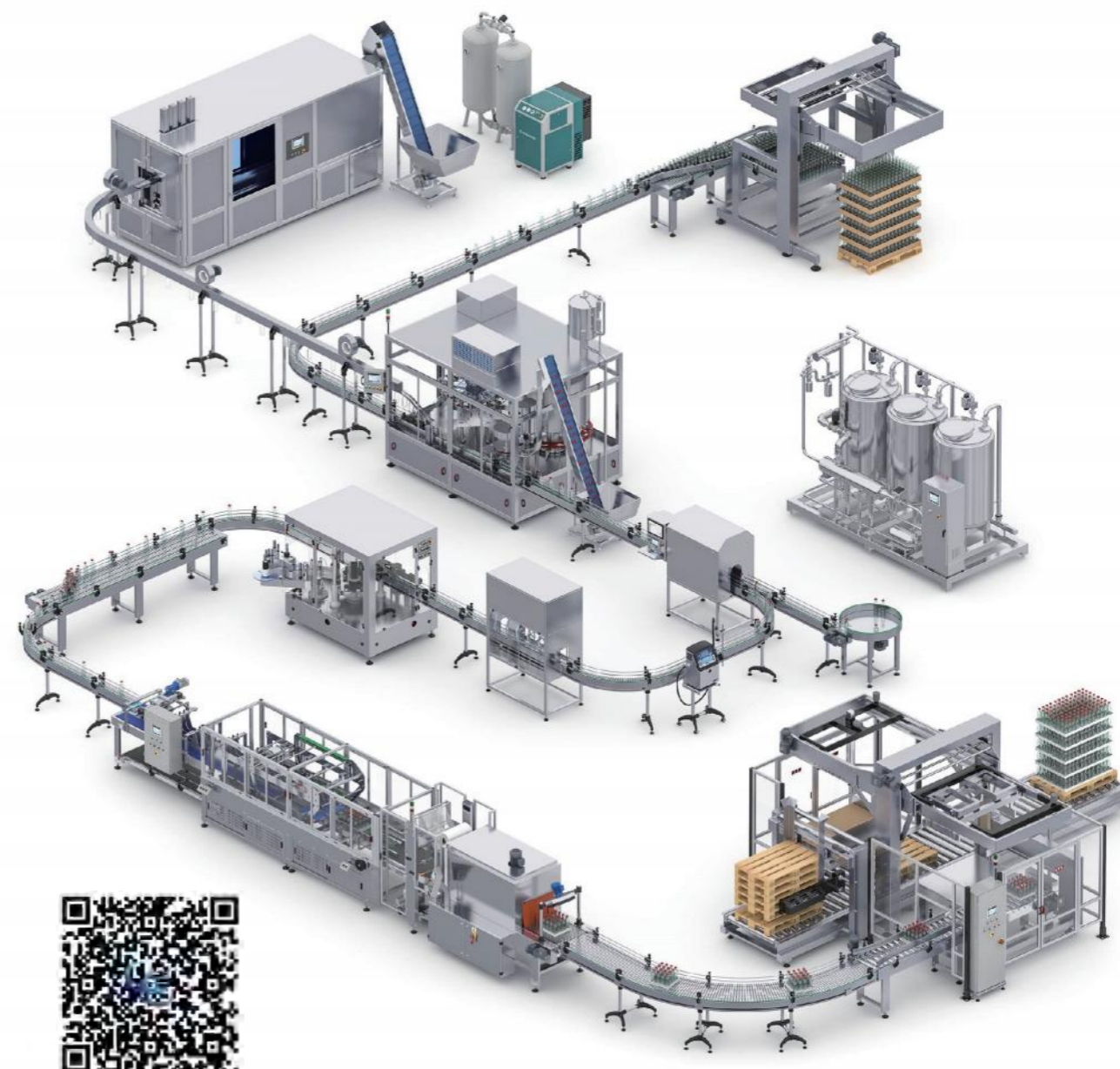
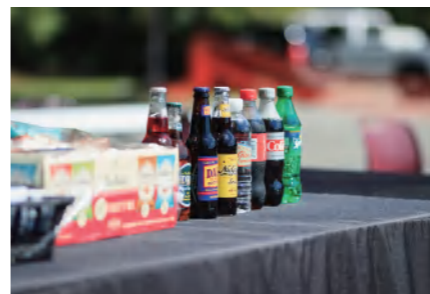
请用相机扫描
Pls scan the code with camera on phone

液态包装生产线

Liquid packing production line

我们从事完整的各类纯净水、矿泉水、水乳制品、果汁、饮料（包括酒类）生产线，整线速度从4000-48000BHP，从吹瓶、灌装、旋盖、贴标、膜包到装箱机和码垛机，根据客户的车间布局设计最高效的交钥匙工程规划，并根据所需配置，提供最适合客户要求的定制服务。

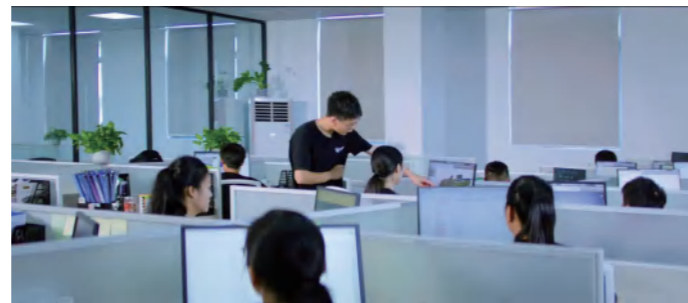
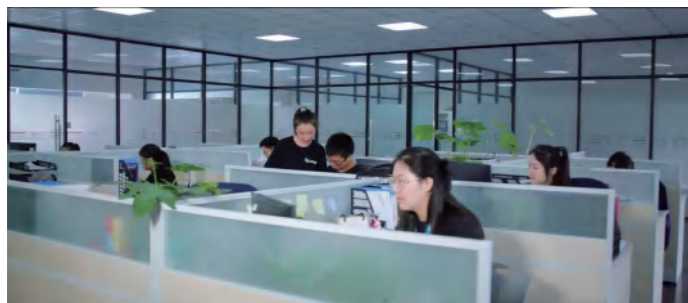
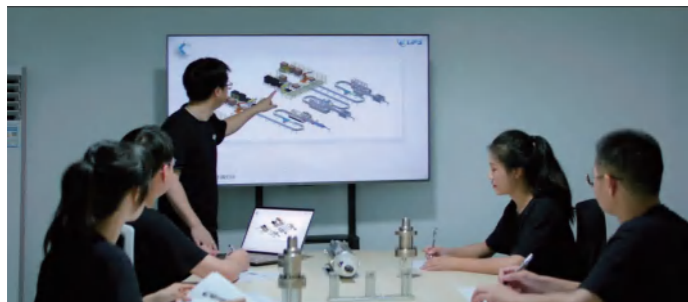
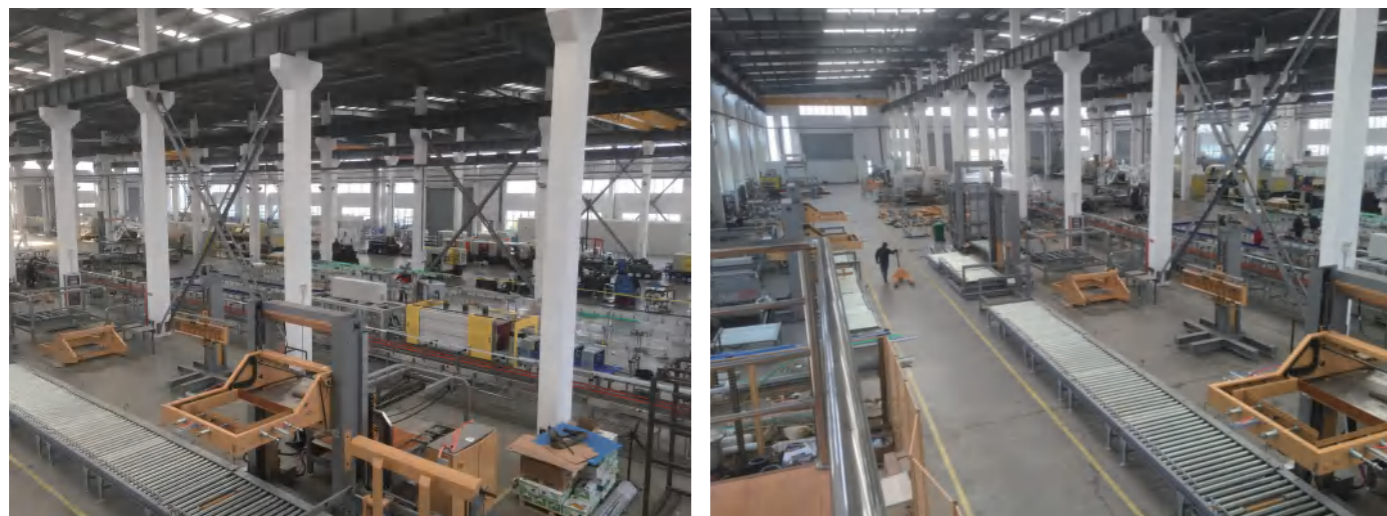
We are engaged in a complete production line for various types of pure water, mineral water, dairy products, fruit juice, and beverages (including alcohol), with a speed ranging from 4000-48000 BHP. From bottle blowing, filling, capping, labeling, film packaging to carton packing and palletizing machines. We design the most efficient turnkey packaging solution according to customer's workshop layout, and provide customized services that are most suitable for the customer's demands according to the required configuration.



请用相机扫描
Pls scan the code with camera on phone

FACTORY REAL SCENE

工厂实景



SUPPLIERS

我们的供应商

 西门子		 Sensor Intelligence.
PLC	变频器 Frequency converter	传感器 Sensor
		 西门子
低压 电气 Low voltage apparatus	电机 Motor	伺服电机 Servo motor
		
机械臂 Robot arm	机械臂 Robot arm	机械臂 Robot arm
	 欧姆龙	
端子 Terminal	接近开关 Proximity switches	气动系统 Pneumatic components

进口，高品质的电气元件，是产品高质量的保证。

Imported, high quality pneumatic components are guarantee of high quality products.